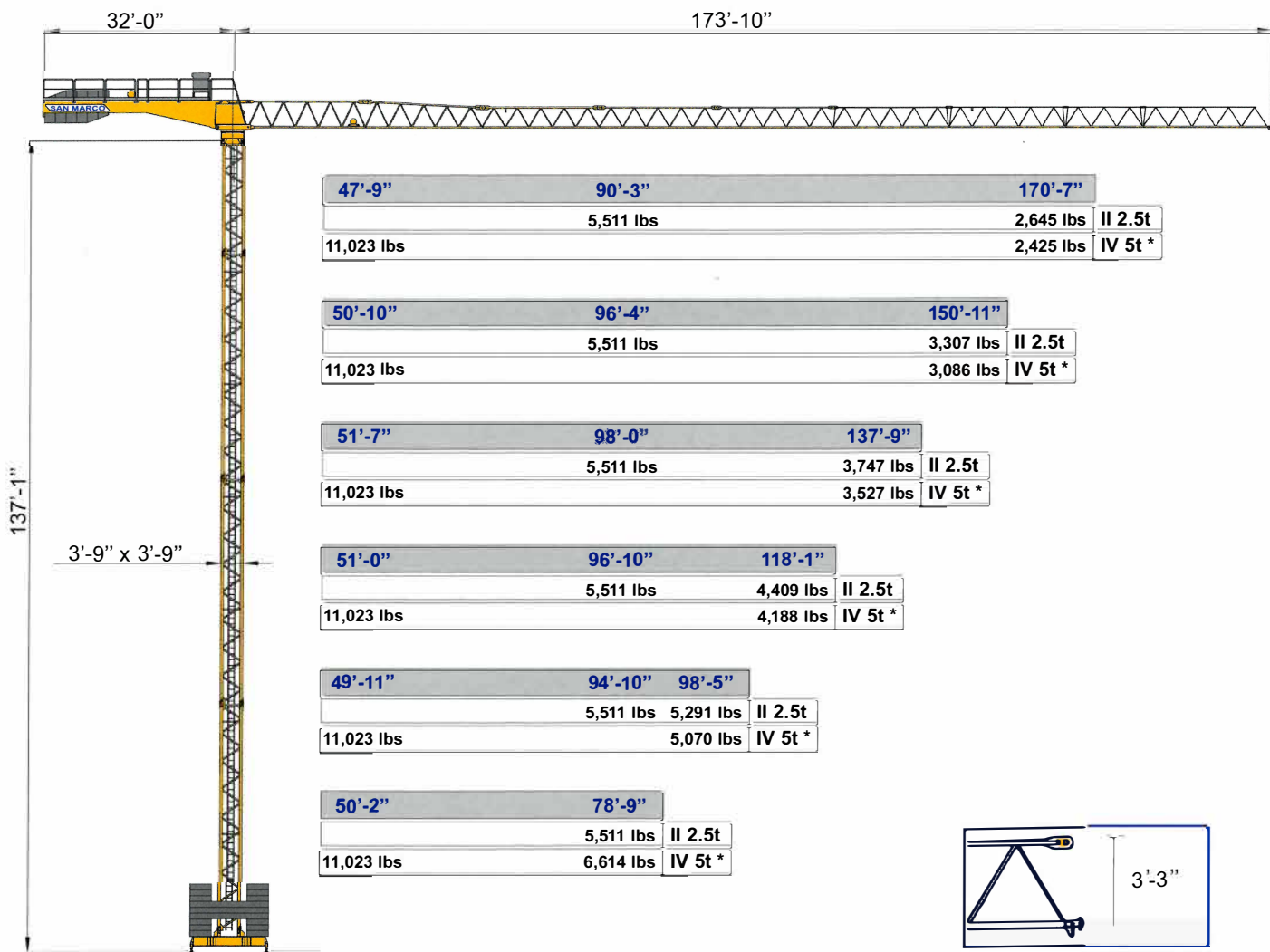




- US** Modular tower crane - City Crane Version
- IT** Gru a torre modulare - Versione City Crane
- ES** Grua a montaje modular - Versión City Crane
- FR** Grue a tour modulair - Version City Crane

SMT 522

Triverter 444



- US** Loads diagrams
- IT** Diagrammi di carico
- ES** Curvas de carga
- FR** Courbes de charges

ft-in	45'-11"	52'-6"	59'-0"	65'-7"	72'-2"	78'-9"	85'-3"	91'-10"	98'-5"	105'-0"	111'-6"	118'-1"	124'-8"	131'-3"	137'-9"	144'-4"	150'-11"	157'-6"	164'-0"	170'-7"	ft-in
lbs	5,511	5,511	5,511	5,511	5,511	5,511	5,511	5,401	4,982	4,651	4,321	4,056	3,814	3,593	3,395	3,218	3,042	2,910	2,755	2,645	170'-7"
	5,511	5,511	5,511	5,511	5,511	5,511	5,511	5,379	5,004	4,673	4,365	4,100	3,880	3,659	3,448	3,307	150'-11"				137'-9"
	5,511	5,511	5,511	5,511	5,511	5,511	5,511	5,511	5,401	5,026	4,696	4,409	118'-1"				98'-5"				

Single wiring 2.5t standard
 Tiro in II 2.5t standard
 Tiro simple 2.5t standard
 Simple mouflage 2.5t standard



ft-in	45'-11"	52'-6"	59'-0"	65'-7"	72'-2"	78'-9"	85'-3"	91'-10"	98'-5"	105'-0"	111'-6"	118'-1"	124'-8"	131'-3"	137'-9"	144'-4"	150'-11"	157'-6"	164'-0"	170'-7"	ft-in	
lbs	11,023	9,899	8,664	7,694	6,900	6,239	5,688	5,203	4,806	4,431	4,122	3,858	3,615	3,373	3,174	2,998	2,844	2,689	2,535	2,425	170'-7"	
	11,023	10,626	9,303	8,245	7,407	6,702	6,107	5,599	5,181	4,784	4,453	4,166	3,902	3,659	3,439	3,262	3,086	150'-11"				137'-9"
	11,023	10,803	9,480	8,399	7,540	6,834	6,217	5,710	5,269	4,894	4,541	4,233	3,968	3,725	3,527	137'-9"						
	11,023	10,670	9,325	8,289	7,429	6,724	6,129	5,621	5,181	4,806	4,475	4,188	118'-1"									
	11,023	10,406	9,105	8,091	7,253	6,570	5,974	5,489	5,070	98'-5"												
	11,023	10,472	9,171	8,135	7,297	6,614	78'-9"															

Double wiring 5t optional *
 Tiro in IV 5t optional
 Tiro doble 5t optional
 Double mouflage 5t optionnel



DIN 15018 H1 B3
 ISO 4301



US Hoisting - Speed controller

IT Sollevamento - Variatore (Inverter)

ES Elevación - Variador

FR Levage - Variateur

ASVF11	II	ft/min	26	82	126	164	kW
	2.5t	lbs	5,511	5,511	3,968	2,755	
	IV	ft/min	13	41	63	82	11
	5t *	lbs	11,023	11,023	7,936	5,511	

* Optional • Opzionale • Opcional • Optionnel

US Power requirement

IT Potenza elettrica necessaria

ES Potencia eléctrica necesaria

FR Puissance électrique nécessaire

V	Hz	kW
480 (±5%)	60	25

US Trolleying - Speed controller

IT Carrello - Variatore (Inverter)

ES Carro - Variador

FR Chariot - Variateur

ACVF2.5	ft/min	40	80	120	160	kW	2.5

US Slewing - Speed controller

IT Rotazione - Variatore (Inverter)

ES Orientación - Variador

FR Orientation - Variateur

rpm	0.1	0.3	0.5	0.8	6.5	daNm

US Tower composition

IT Composizione torre

ES Composición torre

FR Composition mât

Tower elements Elementi torre Elementos torre Eléments du mât	h 78' - 9"	h 98' - 5"	h 118' - 1"	h 137' - 9"	h 157' - 6"	h 177' - 2" Foundation Fondamento Fondation	h 177' - 2" Tower Carro Carro Embase	h 196' - 10"	Elements weight (lbs) Peso elementi (lbs) Peso elementos (lbs) Poids éléments (lbs)
150/12 3'-9" x 3'-9" x 19'-0"		1		1					2,645
150/12 3'-9" x 3'-9" x 38'-0"	2	1	2	1					4,850
150/15 3'-9" x 3'-9" x 19'-0"						1	1		3,307
150/15 3'-9" x 3'-9" x 38'-0"		1	1	1	3	2	2	2	5,291
180/15 3'-9" x 3'-9" x 38'-0"				1					6,834
180/15 3'-9" x 5'-3" x 38'-0" booster					1	1	1	1	7,716
180/15 5'-3" x 5'-3" x 38'-0"						1		1	8,157
180/15 5'-3" x 7'-6" x 38'-0" booster							1	1	10,362

US Jib ballast

IT Zavorre di volata

ES Contrapeso de la controflecha

FR Contrepoids de la flèche

Jib Braccio Flecha Flèche	ft-in	78'-0"	98'-5"	118'-1"	137'-9"	150'-11"	170'-7"
Ballast Zavorra Contrapeso Lest	lbs	15,102	22,047	24,472	26,897	29,322	29,322

US Base ballast

IT Zavorre di base

ES Contrapeso de la base

FR Lest de base

Truck Carro Carro Embase	Height Altezza Altura Hauteur	Ballast Zavorra Contrapeso Lest
ft-in	ft-in	lbs #
10'-6"x10'-6"	39'-4"/59'-0"/78'-9"	77,164 14
	98'-5"	88,188 16
12'-5"x12'-5"	39'-4"/59'-0"/78'-9"	55,117 10
	98'-5"	66,141 12
	118'-1"	88,188 16
	137'-9"	132,282 24

High-strength steel structure for use at low temperatures • Modular assembly jib and tower • Guaranteed and certified low acoustics emission and sound powers level • Automatic temperature control of electrical equipment for high and low temperatures • Disassembled stair on the tower • Anemometer with optical and acoustic indicators

Struttura in acciaio ad alta resistenza per impiego a basse temperature • Braccio e torre a montaggio modulare • Bassa emissione acustica e livello di potenza sonora garantito e certificato • Climatizzazione termostatica dell'equipaggiamento elettrico per alte e basse temperature • Mezzi di accesso alla parte superiore della gru • Anemometro con segnalatore ottico e acustico

Estructura en acero de alta resistencia para trabajar a baja temperatura • Flecha y torre de montaje modular • Baja emisión acústica y nivel de potencia sonora garantizada y certificada • Climatización termostática del equipamiento eléctrico para bajas y altas temperaturas • Medios de acceso a la parte superior de la grúa • Anemómetro con señalizador óptico y acústico

Structures en acier à haute résistance pour utilisation aux basses températures • Flèche et mât à montage modulaire • Émission acoustique réduite et niveau de puissance sonore garantie avec certificat • Climatisation thermostatique de l'équipement électrique pour températures ambiantes élevées ou basses • Escaliers d'accès au mât démontables • Anémomètre avec avertisseur optique et acoustique

US

In compliance with the 98/37/EC regulations • In compliance with the 87/405/EEC, 2000/14/EC and 2005/88/EC regulations on noise levels • In compliance with the 89/336/EEC regulations on electromagnetic compatibility • In compliance with the 73/23/EEC regulations on electrical equipment • Machine covered by lifetime public liability insurance coverage • Specifications subject to modification without notice.

IT

Conforme alle direttive 98/37/CE direttiva macchine • Conforme alle direttive 87/405/CEE, 2000/14/CE e 2005/88/CE livello acustico • Conforme alle direttive 89/336/CEE compatibilità magnetica • Conforme alle direttive 73/23/CEE bassa tensione • Conforme al D.P.R. 27-4-55 n. 547 • Le nostre macchine sono protette da assicurazione per responsabilità civile prodotti senza termine • Specifiche suscettibili di variazioni senza preavviso.

ES

Conforme con las directivas 98/37/CE • Conforme con las directivas 87/405/CEE, 2000/14/CE y 2005/88/CE sobre el nivel acústico • Conforme con la directiva 89/336/CEE sobre la compatibilidad magnética • Conforme con la directiva 73/23/CEE sobre baja tensión • Máquina protegida y asegurada por la responsabilidad civil de productos todo riesgo • Especificaciones sujetas a modificaciones sin previo aviso.

FR

Conforme à les directives 98/37/CE • Conforme à les directives 87/405/CEE, 2000/14/CE et 2005/88/CE sur le niveau acoustique • Conforme à la directive 89/336/CEE sur la compatibilité électromagnétique • Conforme à la directive 73/23/CEE sur l'équipement électrique • Machines assurées pour la responsabilité civile des produits sans échéance • Specifications susceptibles de modification sans avis préalable

