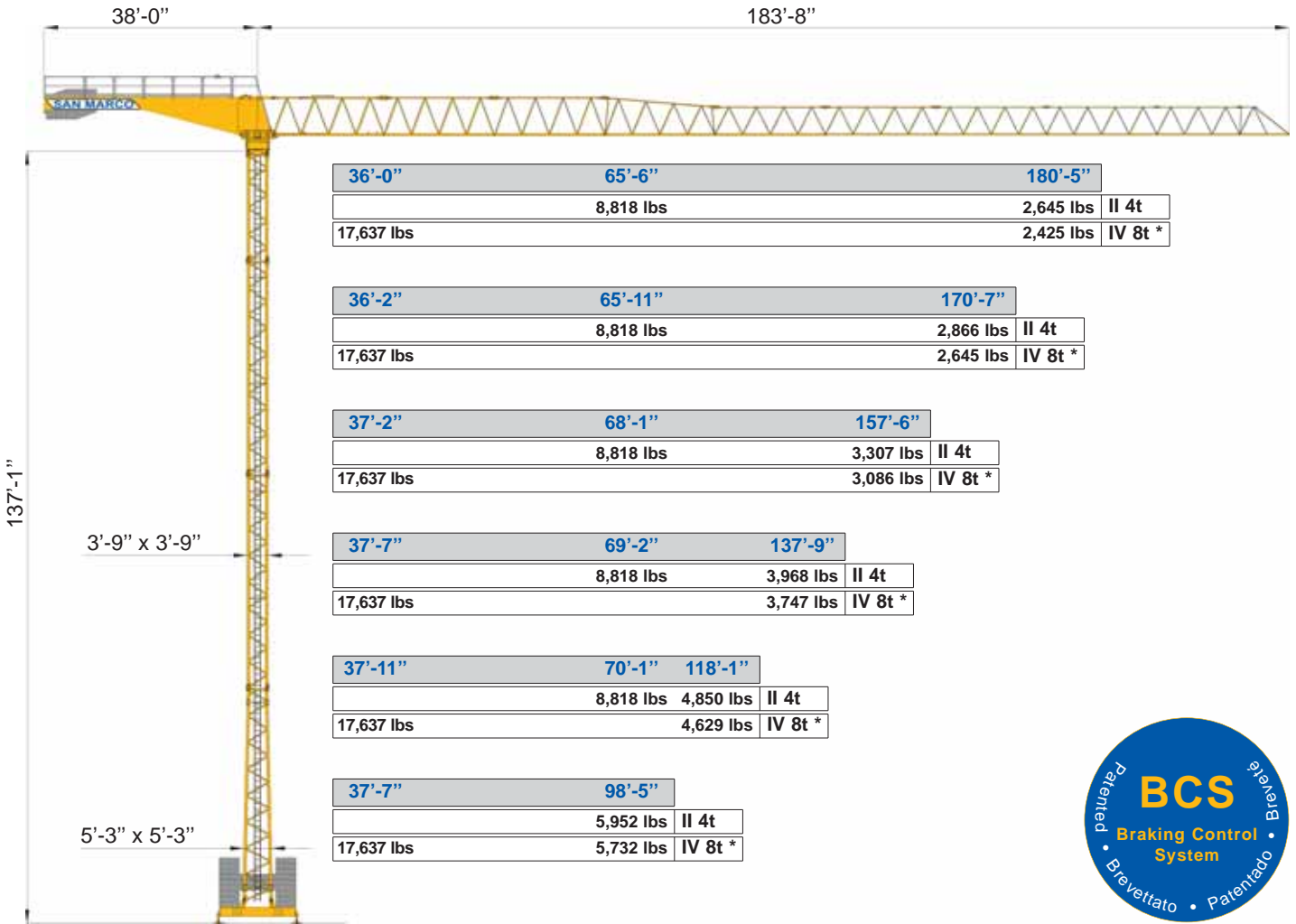




- US** Modular tower crane - City Crane Version
- IT** Gru a torre modulare - Versione City Crane
- ES** Grúa a montaje modular - Versión City Crane
- FR** Grue a tour modulaire - Version City Crane

SMT 551

Triverter 444



	ft-in	32'-9"	39'-4"	45'-11"	52'-6"	59'-0"	65'-7"	72'-2"	78'-9"	85'-3"	91'-10"	98'-5"	105'-0"	111'-6"	118'-1"	124'-8"	131'-3"	137'-9"	144'-4"	150'-11"	157'-6"	164'-0"	170'-7"	180'-5"	ft-in	
US Loads diagrams		8,818	8,188	8,188	8,188	8,188	7,967	8,927	14,36	5,255	9,965	5,335	11,44	7,624	4,534	1,883	9,243	7,033	5,053	3,073	1,302	9,762	8,222	6,45	180'-5"	
IT Diagrammi di carico		8,818	8,188	8,188	8,188	8,188	8,187	9,587	20,96	5,706	0,405	5,775	1,584	8,064	4,974	2,103	9,463	7,253	5,273	3,293	1,522	9,982	8,66	6,770	170'-7"	
ES Curvas de carga	lbs	8,818	8,188	8,188	8,188	8,188	8,188	8,188	24,57	4,736	8,346	2,615	7,985	3,575	0,044	6,734	3,874	1,223	8,803	6,593	4,833	3,07	1,57	6	157'-6"	
FR Courbes de charges		8,818	8,188	8,188	8,188	8,188	8,188	8,188	3,997	6,066	9,446	3,715	8,865	4,675	0,924	7,624	4,534	1,883	9,68	137'-9"						
		8,818	8,188	8,188	8,188	8,188	8,188	8,188	5,327	7,387	0,556	4,815	9,965	5,555	1,814	8,50	118'-1"									
		8,818	8,188	8,188	8,188	8,188	8,188	8,188	4,667	6,727	0,106	4,375	9,52	88'-5"												

Single wiring 4t standard
 Tiro in II 4t standard
 Tiro simple 4t standard
 Simple mouflage 4t standard



	ft-in	32'-9"	39'-4"	45'-11"	52'-6"	59'-0"	65'-7"	72'-2"	78'-9"	85'-3"	91'-10"	98'-5"	105'-0"	111'-6"	118'-1"	124'-8"	131'-3"	137'-9"	144'-4"	150'-11"	157'-6"	164'-0"	170'-7"	180'-5"	ft-in	
		17,637	15,999	13,338	11,442	9,878	8,187	8,927	14,36	5,255	9,965	5,335	11,44	7,624	4,534	1,883	9,243	7,033	5,053	3,073	1,302	9,762	8,222	6,45	180'-5"	
		17,637	16,006	13,404	11,486	10,031	8,862	7,914	14,36	4,815	9,305	4,455	0,264	6,514	3,214	0,343	7,703	5,493	3,293	1,302	9,542	7,772	6,45	6	170'-7"	
	lbs	17,637	16,535	13,845	11,883	10,362	9,171	8,201	7,385	6,724	6,151	5,644	5,225	4,828	4,497	4,183	3,924	3,681	3,461	3,262	3,086	2,922	2,772	2,645	2,425	157'-6"
		17,637	16,773	14,021	12,015	10,494	9,281	8,311	7,495	6,812	6,217	5,732	5,291	4,894	4,563	4,255	3,993	3,747	3,574	3,461	3,357	3,253	3,149	3,045	2,941	137'-9"
		17,637	16,910	14,176	12,147	10,604	9,392	8,397	7,584	6,876	6,305	5,798	5,357	4,960	4,629	4,311	4,044	3,833	3,661	3,548	3,435	3,322	3,209	3,096	2,983	118'-1"
		17,637	16,711	13,999	12,015	10,494	9,281	8,287	7,495	6,812	6,217	5,732	5,291	4,894	4,563	4,255	3,993	3,747	3,574	3,461	3,357	3,253	3,149	3,045	2,941	88'-5"

Double wiring 8t optional
 Tiro in IV 8t optional
 Tiro doble 8t optional
 Double mouflage 8t optional



DIN 15018 H1 B3
 ISO 4301



