



CUSTOM SERVICE CRANE, INC.



TOWER DIVISION

Elevating Expectations for Over 25 Years



CUSTOM SERVICE CRANE, INC.

Our path to City Cranes, Heavy-lift & Luffing Tower Cranes

Custom Service Crane, Inc. has been in the crane, lifting and rigging business for over 25 years. Early on, we recognized the trend of congested jobsites and building construction practices that utilize as much geographical area as possible, especially in crowded urban environments and many college campuses. This building practice demanded that Architects and Engineers position the structures curb-to-curb and sidewalk-to-sidewalk in many instances, utilizing as much of the expensive property as possible. Many of these types of projects are 4-10 story structures, some of which are designed with lightweight framing techniques over a few stories of iron or a parking garage. The majority of these projects are shorter term projects of 3-6 months, making the choice of a conventional tower crane and its typical poured embed foundation an expensive option, especially for contractors that are used to having more than enough room to operate while utilizing mobile cranes.

Over two decades ago, Custom Service Crane, Inc. recognized the need for an answer to hoisting on these types of projects. With the dilemma of tight sites and tall buildings, we knew the answer was still the Tower Crane, but how can we get these machines feasible for shorter term projects?

City Tower Cranes soon became the answer we were looking for. We looked and have owned Self-Erectors but the issues we found was the amount of trucking and erection times were nearly the same as the taller City Cranes with their much longer jibs. City Tower Cranes offer so much more versatility with many different configurations from conventional Embedded Foundation Anchors to several styles of Engineered Ballasted Mobile Bases on outriggers similar to typical hydraulic cranes (pictured on the next few pages). Custom Service Crane, Inc. has invested heavily in this type of technology with equipment from chosen manufacturers and utilizing only our factory-trained erection crews and service technicians.

Custom Service Crane, Inc. has been listed as one of the "Top 50 Tower Crane Companies" in the nation for over five years standing by *American Crane* and *Transport* magazine.

With our increasingly popular complete erection and dismantle package and factory-trained crews, we are now offering larger tower cranes. Our growth can only be obtained while emphasizing the same safety environment and services that our customers need and we demand. From small to large projects, Custom Service Crane's Tower Division can handle the calls.

CITY SET UP OPTIONS



Typical embed anchor



Exposed embed anchor



Engineered reinforced slab



12'5" base on engineered mats
Heights up to 137'



14'9" base on engineered mats
Heights up to 177'

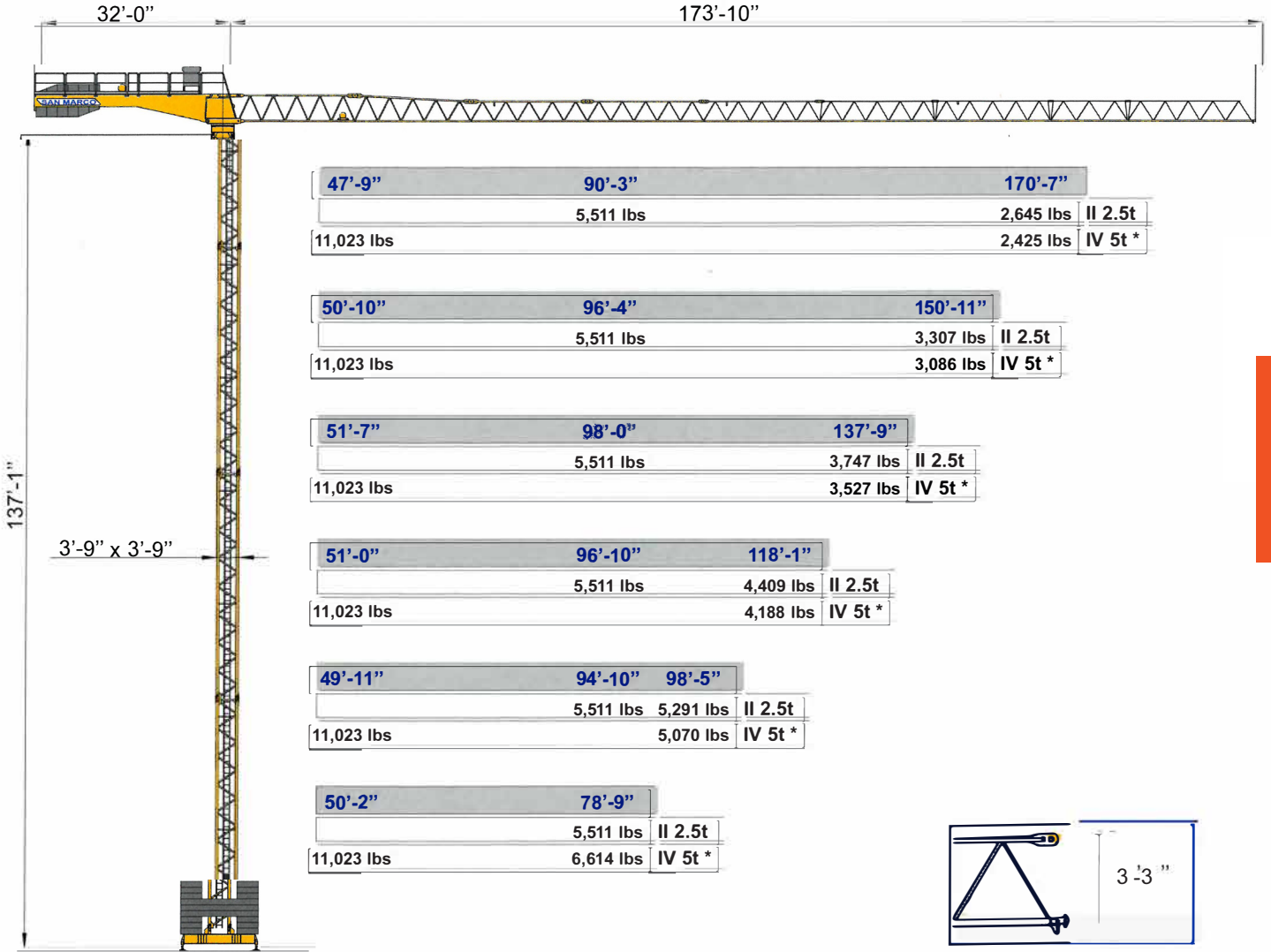


19'7" base on engineered mats
Heights up to 236'



Modular tower crane - City Crane Version

SMT 522



CITY

Loads diagrams

ft-in	45'-11"	52'-6"	59'-0"	65'-7"	72'-2"	78'-9"	85'-3"	91'-10"	98'-5"	105'-0"	111'-6"	118'-1"	124'-8"	131'-3"	137'-9"	144'-4"	150'-11"	157'-6"	164'-0"	170'-7"	ft-in
	5,511	5,511	5,511	5,511	5,511	5,511	5,511	5,401	4,982	4,651	4,321	4,056	3,814	3,593	3,395	3,218	3,042	2,910	2,755	2,645	170'-7"
	5,511	5,511	5,511	5,511	5,511	5,511	5,511	5,511	5,379	5,004	4,673	4,365	4,100	3,880	3,659	3,438	3,307	150'-11"			
lbs	5,511	5,511	5,511	5,511	5,511	5,511	5,511	5,511	5,467	5,092	4,762	4,453	4,188	3,946	3,747	137'-9"					
	5,511	5,511	5,511	5,511	5,511	5,511	5,511	5,511	5,401	5,026	4,696	4,409	118'-1"								
	5,511	5,511	5,511	5,511	5,511	5,511	5,511	5,511	5,291	98'-5"											

Single wiring 2.5t standard



ft-in	45'-11"	52'-6"	59'-0"	65'-7"	72'-2"	78'-9"	85'-3"	91'-10"	98'-5"	105'-0"	111'-6"	118'-1"	124'-8"	131'-3"	137'-9"	144'-4"	150'-11"	157'-6"	164'-0"	170'-7"	ft-in
	11,023	9,899	8,664	7,694	6,900	6,239	5,688	5,203	4,806	4,431	4,122	3,858	3,615	3,373	3,174	2,998	2,844	2,689	2,535	2,425	170'-7"
	11,023	10,626	9,303	8,245	7,407	6,702	6,107	5,599	5,181	4,784	4,453	4,166	3,902	3,659	3,439	3,262	3,086	150'-11"			
lbs	11,023	10,803	9,480	8,399	7,540	6,834	6,217	5,710	5,269	4,894	4,541	4,233	3,968	3,725	3,527	137'-9"					
	11,023	10,406	9,105	8,091	7,253	6,570	5,974	5,489	5,070	98'-5"											
	11,023	10,472	9,171	8,135	7,297	6,614	78'-9"														

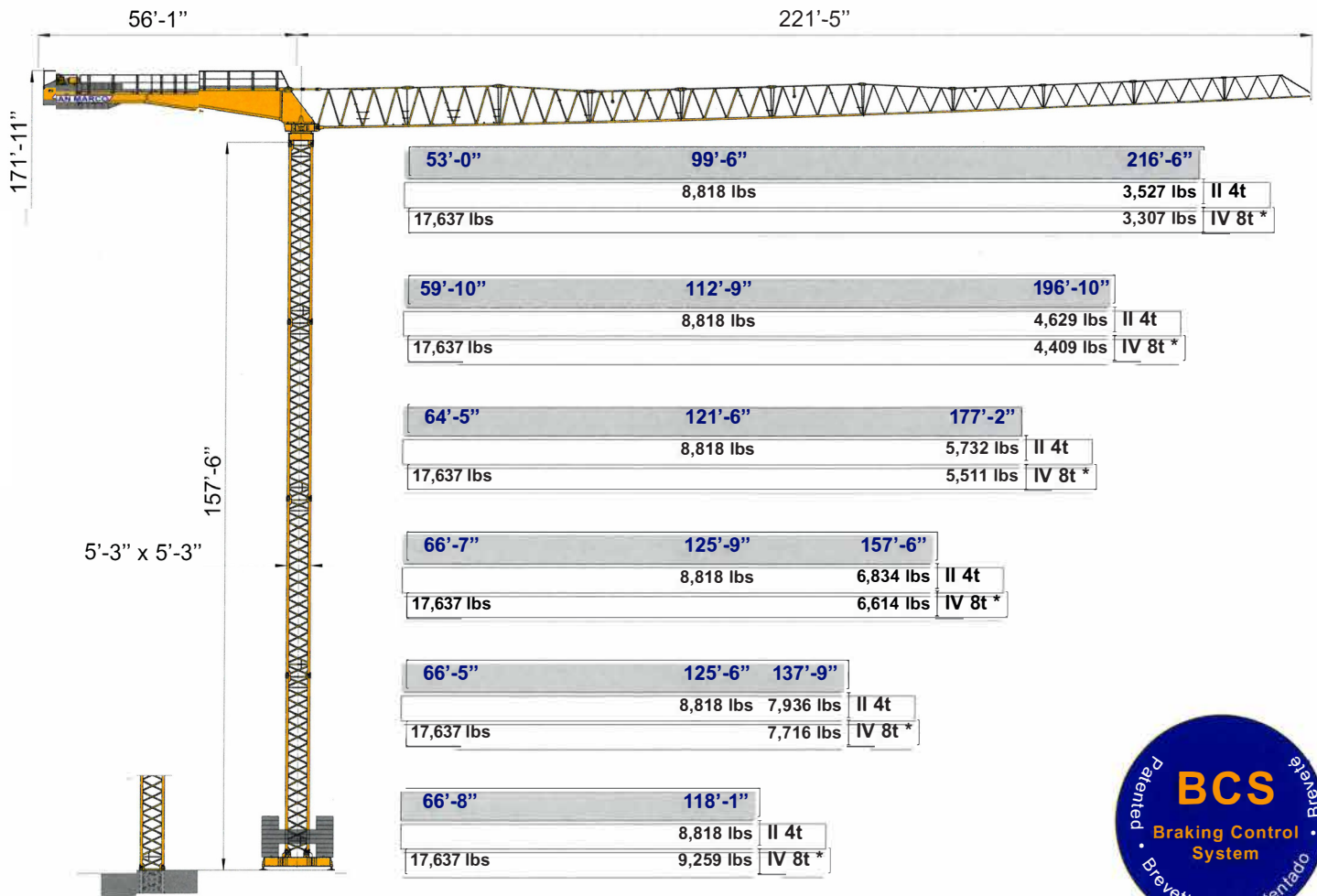
Double wiring 5t optional *





SMT 661

Modular tower crane - City Crane Version



CITY



Loads diagrams

ft-in	45'-11"	52'-6"	59'-0"	65'-7"	72'-2"	78'-9"	85'-3"	91'-10"	98'-5"	105'-0"	111'-4"	118'-1"	124'-8"	131'-3"	137'-9"	144'-4"	150'-11"	157'-6"	164'-0"	170'-7"	180'-5"	183'-8"	190'-3"	196'-10"	203'-5"	209'-11"	216'-6"	ft-in	
lbs	8,818	8,818	8,818	8,818	8,818	8,818	8,818	8,818	8,818	8,818	8,818	8,818	8,818	8,818	8,818	8,818	8,818	8,818	8,818	8,818	8,818	8,818	8,818	8,818	8,818	8,818	8,818	8,818	8,818

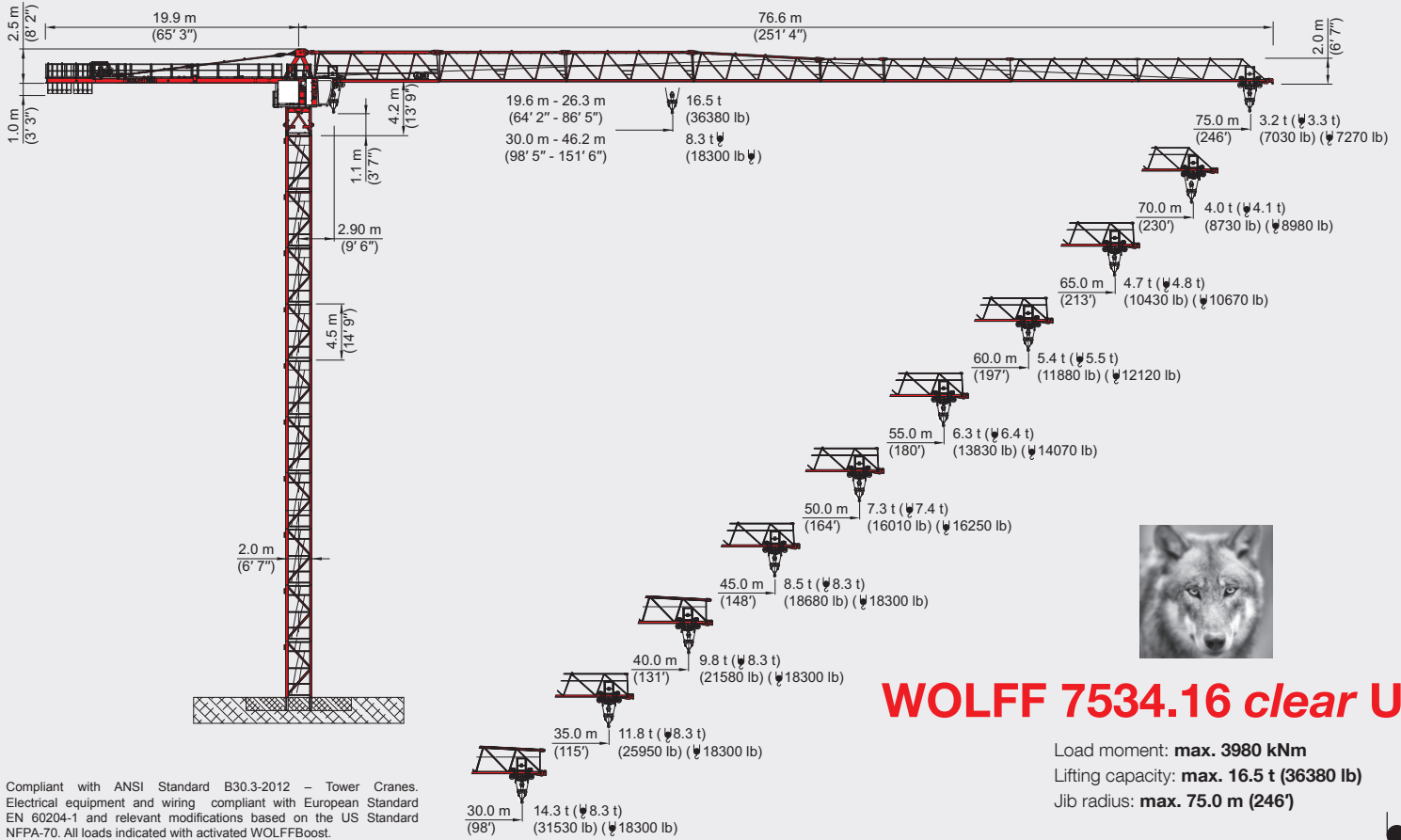
ft-in	45'-11"	52'-6"	59'-0"	65'-7"	72'-2"	78'-9"	85'-3"	91'-10"	98'-5"	105'-0"	111'-4"	118'-1"	124'-8"	131'-3"	137'-9"	144'-4"	150'-11"	157'-6"	164'-0"	170'-7"	180'-5"	183'-8"	190'-3"	196'-10"	203'-5"	209'-11"	216'-6"	ft-in
lbs	17,637	17,637	17,637	17,637	17,637	17,637	17,637	17,637	17,637	17,637	17,637	17,637	17,637	17,637	17,637	17,637	17,637	17,637	17,637	17,637	17,637	17,637	17,637	17,637	17,637	17,637	17,637	17,637

Single wiring 4t standard



Double wiring 8t optional *





Compliant with ANSI Standard B30.3-2012 – Tower Cranes.
Electrical equipment and wiring compliant with European Standard EN 60204-1 and relevant modifications based on the US Standard NFPA-70. All loads indicated with activated WOLFFBoost.



WOLFF 7534.16 clear US

Load moment: **max. 3980 kNm**
Lifting capacity: **max. 16.5 t (36380 lb)**
Jib radius: **max. 75.0 m (246')**

HEAVY-LIFT

Load Data [t] (lb) - WOLFF 7534.16 clear US - BOOST

Jib radius [m] (ft)	Jib length [m] (ft)										Load capacity [t] (lb)	
	20.0 (65' 7")	25.0 (82' 0")	30.0 (98' 5")	35.0 (114' 10")	40.0 (131' 3")	45.0 (147' 8")	50.0 (164' 1")	55.0 (180' 5")	60.0 (196' 10")	65.0 (213' 3")		
75.0 (246')	8.3 (18300)	8.3 (18300)	8.3 (18300)	8.3 (18300)	7.4 (16340)	6.4 (14180)	5.7 (12450)	5.0 (11040)	4.5 (9870)	4.0 (8870)	3.6 (8020)	3.3 (7270)
72.5 (238')	8.3 (18300)	8.3 (18300)	8.3 (18300)	8.3 (18300)	7.7 (17010)	6.7 (14770)	5.9 (12990)	5.2 (11530)	4.7 (10310)	4.2 (9280)	3.8 (8390)	
70.0 (230')	8.3 (18300)	8.3 (18300)	8.3 (18300)	8.3 (18300)	8.2 (18010)	7.1 (15660)	6.3 (13790)	5.6 (12270)	5.0 (10980)	4.5 (9900)	4.1 (8980)	4.0 (8730)
67.5 (221')	8.3 (18300)	8.3 (18300)	8.3 (18300)	8.3 (18300)	8.3 (18300)	7.3 (16090)	6.4 (14170)	5.7 (12500)	5.1 (11300)	4.6 (10200)		
65.0 (213')	8.3 (18300)	8.3 (18300)	8.3 (18300)	8.3 (18300)	8.3 (18300)	7.6 (16790)	6.7 (14800)	6.1 (13170)	5.4 (11810)	4.9 (10870)		
62.5 (205')	8.3 (18300)	8.3 (18300)	8.3 (18300)	8.3 (18300)	8.3 (18300)	7.8 (17030)	6.8 (15020)	6.1 (13380)	5.5 (12200)			
60.0 (197')	8.3 (18300)	8.3 (18300)	8.3 (18300)	8.3 (18300)	8.3 (18300)	7.8 (17190)	6.9 (15170)	6.1 (13510)	5.6 (12410)			
57.5 (189')	8.3 (18300)	8.3 (18300)	8.3 (18300)	8.3 (18300)	8.3 (18300)	8.0 (17590)	7.0 (15520)	6.3 (13830)				
55.0 (180')	8.3 (18300)	8.3 (18300)	8.3 (18300)	8.3 (18300)	8.3 (18300)	8.1 (17880)	7.2 (15790)	6.4 (14070)				
52.5 (172')	8.3 (18300)	8.3 (18300)	8.3 (18300)	8.3 (18300)	8.3 (18300)	8.3 (18300)	7.4 (16190)					
50.0 (164')	8.3 (18300)	8.3 (18300)	8.3 (18300)	8.3 (18300)	8.3 (18300)	8.3 (18300)	7.4 (16250)					
47.5 (156')	8.3 (18300)	8.3 (18300)	8.3 (18300)	8.3 (18300)	8.3 (18300)	8.3 (18300)						
45.0 (148')	8.3 (18300)	8.3 (18300)	8.3 (18300)	8.3 (18300)	8.3 (18300)	8.3 (18300)						
42.5 (139')	8.3 (18300)	8.3 (18300)	8.3 (18300)	8.3 (18300)	8.3 (18300)							
40.0 (131')	8.3 (18300)	8.3 (18300)	8.3 (18300)	8.3 (18300)	8.3 (18300)							
37.5 (123')	8.3 (18300)	8.3 (18300)	8.3 (18300)	8.3 (18300)								
35.0 (115')	8.3 (18300)	8.3 (18300)	8.3 (18300)									
32.5 (107')	8.3 (18300)	8.3 (18300)										
30.0 (98')	8.3 (18300)											

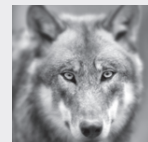
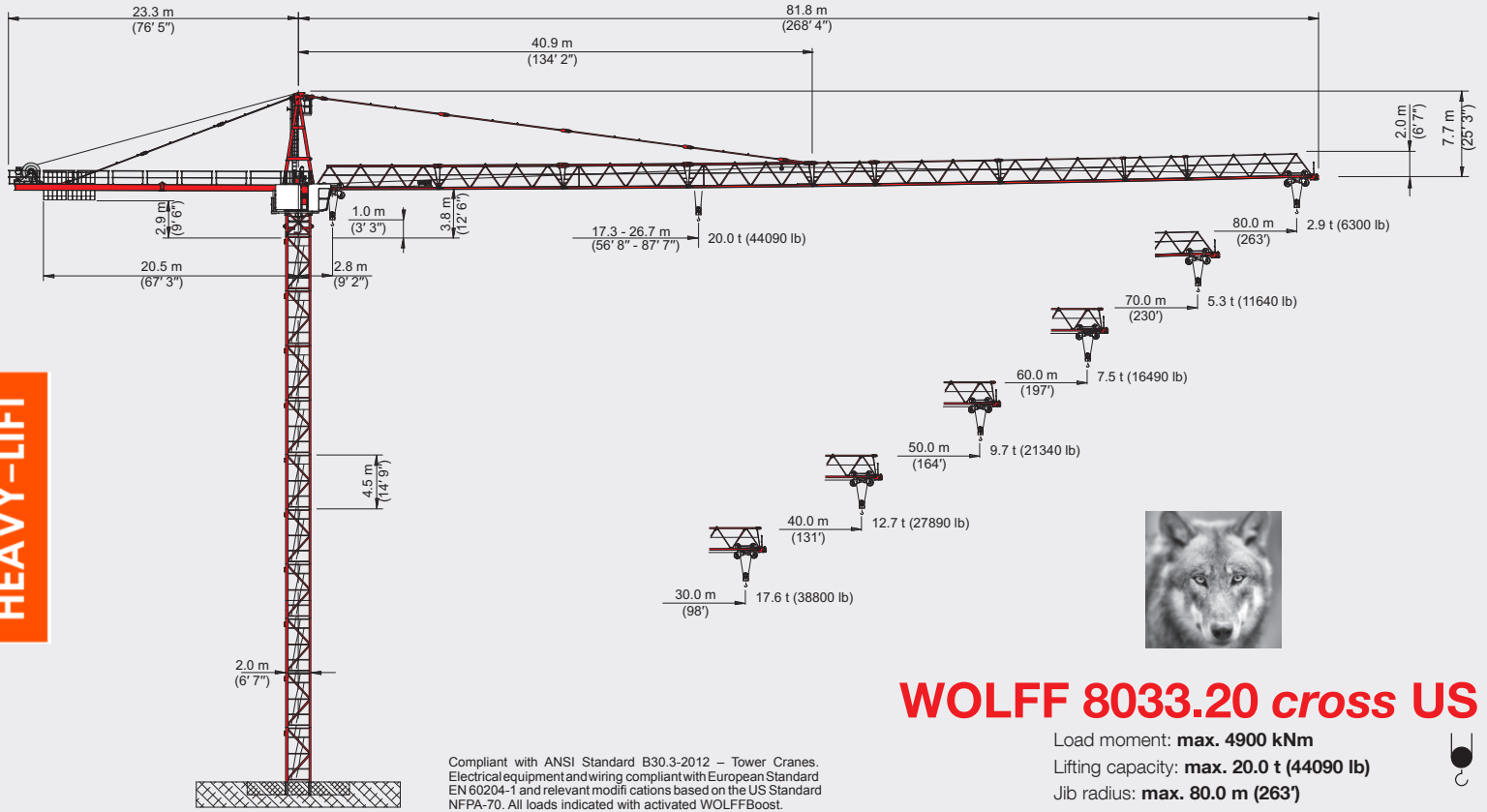
Mechanisms - WOLFF 7534.16 clear US - (Hw 875 FU)

Motor [kW] (hp)	75 (100)	75 (100)	9.0 (12)	2 x 6.0 (2 x 8)	2 x 5.5 (2 x 7.4)	
Speed	0 - 1.5 t (0 - 3307 lb) 0 ... 185 m/min (0 ... 607 ft/min) stepless	0 - 3.6 t (0 - 7937 lb) 0 ... 94 m/min (0 ... 308 ft/min) stepless	0 - 3.0 t (0 - 6614 lb) 0 ... 100 m/min (0 ... 328 ft/min) stepless	0 - 3.0 t (0 - 6614 lb) 0 ... 100 m/min (0 ... 328 ft/min) stepless	0.80 min ⁻¹	25.0 m/min (82 ft/min)
hook path [m] (ft)	460 (1509)	230 (755)				





HEAVY-LIFT



WOLFF 8033.20 cross US

Load moment: **max. 4900 kNm**
 Lifting capacity: **max. 20.0 t (44090 lb)**
 Jib radius: **max. 80.0 m (263')**



Compliant with ANSI Standard B30.3-2012 – Tower Cranes.
 Electrical equipment and wiring compliant with European Standard EN 60204-1 and relevant modification clauses based on the US Standard NFPA-70. All loads indicated with activated WOLFFBoost.

Load Data [t] (lb) - WOLFF 8033.20 cross US - BOOST

Jib radius [m] (ft)	30.0 (98' 5")	35.0 (114' 10")	40.0 (131' 3")	45.0 (147' 8")	50.0 (164' 1")	55.0 (180' 5")	60.0 (196' 10")	65.0 (213' 3")	70.0 (229' 8")	75.0 (246' 1")	80.0 (262' 6")
80.0 (263')	10.7 (23640)	8.9 (19680)	7.6 (16710)	6.5 (14400)	5.7 (12550)	5.0 (11030)	4.4 (9770)	4.0 (8700)	3.5 (7790)	3.2 (7000)	2.9 (6300)
77.5 (254')	12.0 (26530)	10.1 (22170)	8.6 (18880)	7.4 (16320)	6.5 (14280)	5.7 (12610)	5.1 (11220)	4.6 (10040)	4.1 (9030)	3.7 (8150)	
75.0 (246')	13.2 (29150)	11.1 (24430)	9.5 (20870)	8.2 (18100)	7.2 (15870)	6.4 (14060)	5.7 (12540)	5.1 (11260)	4.6 (10160)	4.2 (9220)	
72.5 (238')	14.1 (31010)	11.8 (25990)	10.1 (22230)	8.8 (19310)	7.7 (16960)	6.8 (15050)	6.1 (13450)	5.5 (12100)	5.0 (10950)		
70.0 (230')	14.8 (32630)	12.4 (27380)	10.6 (23440)	9.3 (20380)	8.1 (17940)	7.2 (15930)	6.5 (14270)	5.8 (12850)	5.3 (11640)		
67.5 (221')	15.4 (34050)	13.0 (28590)	11.1 (24510)	9.7 (21330)	8.5 (18790)	7.6 (16710)	6.8 (14970)	6.1 (13510)			
65.0 (213')	16.0 (35250)	13.4 (29520)	11.5 (25420)	10.0 (22140)	8.9 (19510)	7.9 (17370)	7.1 (15580)	6.4 (14070)			
62.5 (205')	16.5 (36270)	13.8 (30500)	11.9 (26180)	10.4 (22810)	9.1 (20120)	8.1 (17920)	7.3 (16080)				
60.0 (197')	16.8 (37080)	14.2 (31200)	12.2 (26790)	10.6 (23350)	9.4 (20600)	8.3 (18360)	7.5 (16490)				
57.5 (189')	17.1 (37690)	14.4 (31710)	12.4 (27240)	10.8 (23760)	9.5 (20980)	8.5 (18690)					
55.0 (180')	17.3 (38060)	14.5 (32070)	12.5 (27540)	10.9 (24020)	9.6 (21220)	8.6 (18920)					
52.5 (172')	17.4 (38300)	14.6 (32240)	12.6 (27700)	11.0 (24170)	9.7 (21340)						
50.0 (164')	17.4 (38300)	14.6 (32240)	12.6 (27700)	11.0 (24170)	9.7 (21340)						
47.5 (156')	17.5 (38480)	14.7 (32400)	12.6 (27800)	11.0 (24290)							
45.0 (148')	17.4 (38420)	14.7 (32350)	12.5 (27800)	10.9 (24280)							
42.5 (139')	17.5 (38470)	14.7 (32380)	12.6 (27830)								
40.0 (131')	17.5 (38560)	14.7 (32460)	12.7 (27890)								
37.5 (123')	17.5 (38610)	14.8 (32520)									
35.0 (115')	17.5 (38600)	14.7 (32490)									
32.5 (107')	17.6 (38700)										
30.0 (98')	17.6 (38800)										

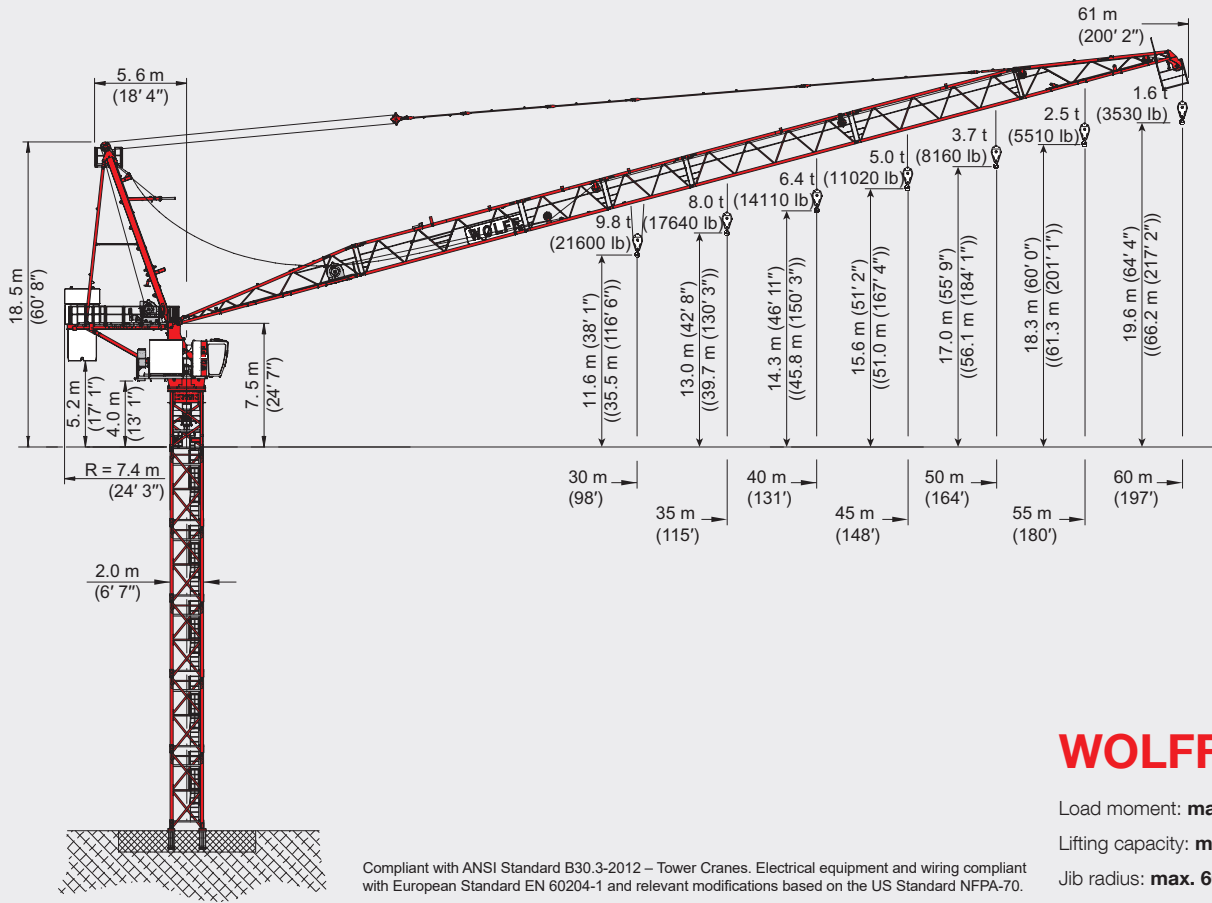
WOLFF-Boost

With the WOLFF-Boost function, the load is allowed to exceed the load torque range specified for the lifting capacities by up to 10%. This is, however, subject to the restriction that hoisting gear and trolley gear must only be moved alternately.

Mechanisms - WOLFF 8033.20 cross US - (Hw 20110 FU)

Motor [kW] (hp)	110 (147)	9.0 (12)	2 x 7.5 (2 x 10)	4 x 5.5 (4 x 7.4)
Speed	0 - 2.2 t (0 - 4850 lb) 0 ... 190 m/min (0 ... 623 ft/min) stepless 0 - 20.0 t (0 - 44090 lb) (0 ... 28 m/min) (0 ... 92 ft/min)	0 - 3.3 t (0 - 7280 lb) 0 ... 100 m/min (0 ... 328 ft/min) stepless 0 - 20.0 t (0 - 44090 lb) (0 ... 32 m/min) (0 ... 105 ft/min)	0.80 min ⁻¹	30.0 m/min (98 ft/min)
Hook path [m] (ft)	400 (1312)			





Compliant with ANSI Standard B30.3-2012 – Tower Cranes. Electrical equipment and wiring compliant with European Standard EN 60204-1 and relevant modifications based on the US Standard NFPA-70.

WOLFF 235 B US

Load moment: **max. 2958 kNm**

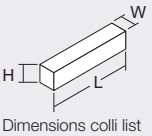
Lifting capacity: **max. 16.0 t (35270 lb)**

Jib radius: **max. 60.0 m (197')**

LUFFING

WOLFF 235 B US Colli List

Pos.	Pcs.	Description	Colli	Length [m] (ft)	Width [m] (ft)	Height [m] (ft)	Weight [kg] (lb)	Volume [m³] (ft³)
1	1	Tower top upper part (incl. luffing gear with 2nd brake, platforms, 185 m (606' 11") luffing rope (370 kg (816 lb)) and counterjib braces)		12.02 (39' 5")	2.58 (8' 6")	2.61 (8' 7")	9910 (21848)	80.94 (2858.4)
	1	Tower top upper part (excl. luffing gear)		12.02 (39' 5")	2.30 (7' 7")	1.89 (6' 2")	6470 (14264)	55.84 (1972.0)
2	1	Tower top lower part		8.79 (28' 10")	2.71 (8' 11")	2.56 (8' 5")	13380 (29498)	60.98 (2153.5)
	1	Connection block Item 2 disassembled		3.52 (11' 7")	2.30 (7' 7")	2.48 (8' 2")	3205 (7066)	20.08 (709.1)
	1	Adapter lower tower top Item 2 disassembled		5.27 (17' 3")	2.32 (7' 7")	2.75 (9' 0")	10175 (22432)	33.62 (1187.3)
3	1	Driver's cabin with suspension (incl. switch cabinet)		5.56 (18' 3")	2.08 (6' 10")	2.56 (8' 5")	2900 (6393)	29.61 (1045.7)
4	1	Counterjib (incl. platforms)		7.04 (23' 1")	2.33 (7' 8")	0.88 (2' 11")	4040 (8907)	14.43 (509.6)
	1	Counterjib (incl. platforms, luffing gear with 2nd brake, 185 m (606' 11") luffing rope (370 kg (816 lb)))		7.04 (23' 1")	2.33 (7' 8")	2.10 (6' 11")	6915 (15245)	34.45 (1216.6)
5	1	Jib element 1 (incl. hoisting gear Hw1660FU with 2nd brake (620 kg (1367 lb)) and 285 m (935' 0") hoisting rope (587 kg (1294 lb)))		11.76 (38' 7")	2.61 (8' 7")	2.00 (6' 7")	5190 (11442)	57.54 (2032.0)
6	1	Jib element 2 (with WOLFF sign)		10.56 (34' 8")	1.73 (5' 8")	2.06 (6' 9")	1750 (3858)	37.63 (1328.9)
7	1	Jib element 3		5.39 (17' 8")	1.96 (6' 5")	2.06 (6' 9")	1080 (2381)	21.76 (768.45)
8	1	Jib element 4		5.39 (17' 8")	1.96 (6' 5")	1.73 (5' 8")	870 (1918)	18.28 (645.6)
9	1	Jib element 5		10.56 (34' 8")	2.01 (6' 7")	1.73 (5' 8")	1290 (2844)	36.72 (1296.8)
10	1	Jib element 6		10.56 (34' 8")	1.96 (6' 5")	1.73 (5' 8")	1225 (2701)	35.81 (1264.6)
11	1	Jib element 7		9.99 (32' 9")	1.94 (6' 4")	1.98 (6' 6")	1690 (3726)	38.37 (1355.0)
12	1	Hook block U8/16		1.43 (4' 8")	0.60 (2' 0")	0.35 (1' 2")	590 (1301)	0.30 (10.6)
13	1	Braces (for 60 m (197') jib)		10.48 (34' 5")	0.72 (2' 4")	0.22 (0' 9")	725 (1598)	1.62 (57.2)
14	1	Box (Loose parts)		1.00 (3' 3")	1.00 (3' 3")	1.00 (3' 3")	150 (331)	1.00 (35.3)



Dimensions colli list

WOLFFKRAN GmbH
 Austraße 72
 D-74076 Heilbronn
 Tel. +49 7131 9815-0
 Fax +49 7131 9815-355
 info@wolffkran.de
 www.wolffkran.de



Main Components

30 m (98') basic jib with hoist drive. Extensions up to 60 m (197') radius in 5 m (16') steps. With hoist winch in jib and active compensator. Slewing frame with slewing gear, electrical central lubrication and slipping system, operator's cabin station with control cabinet. Counter-jib with counterweights.

Drive Technique

All drives frequency controlled squirrel cage motors, fully thermal protected. Hoisting winch Hw 1660 FU, hoisting gear with performance optimization and performance reduction option. Slewing gear with electrically operated weathervaning device. Automatic windforce compensation. Luffing winch Ew 1660 FU.

Electrical Equipment

Multivoltage equipment for supplies from 480 V Y / 277/277 V 60 Hz. Voltage monitoring, electronic safety crane controls with bus technology. Incremental absolute encoders for all operating movements. Electronic load measuring. Multilingual graphic display with touchscreen. Wind indicator and signal lights.

Safety Devices

Electronic overload protection with WOLFF Boost. Increased load moment limitation due to automatic hoist speed reduction. Menu guided setting of overload protection system and off all limiters from operator's cabin. Working space limiter. Anti-collision interface. WOLFF Link data transfer hoist winch optional.

Tower Elements, Climbing Device

Tower configuration of WOLFF system tower elements. WOLFF slug bolt connection. Detachable hydraulic WOLFF system climbing device KWH 20.6.1 or inner climbing device KSH 20 SH.

Cross Frame KR, Mobile Cross Frame KR

Cross Frames with 6.0 m (20') to 8.0 m (26'). Cross frames KR can be converted to KRF. Mobile cross frame KRF with 4.6 m (15') to 10.0 m (33').

Cross Frame Elements KRE, Cross Frame KR

For stationary installation. Cross frame elements KRE can be converted to undercarriage UW. Cross frames KR can be converted to KRF.

Power Requirements and hook paths (Slewing part)

- 118 kVA (Hw 1660 FU).
- 620 m (2034') with one-fall operation
- 310 m (1017') with two-fall operation

Operating Speeds · WOLFF 235 B US · (Hw 1660 FU)

Motor [kW]	60	60	60	1 x 7.5	8 x 5.5
(hp)	(80)	(80)	(80)	(1 x 10)	(8 x 7.4)
Speed	0 - 2.0 t (0 - 4409 lb) 0 ... 130 m/min (0 ... 426 ft/min) stepless	0 - 4.0 t (0 - 8818 lb) 0 ... 65 m/min (0 ... 213 ft/min) stepless	1.3 ... 1.8 min	0.8 min ⁻¹	30.0 m/min (98 ft/min)
Hook path [m]	620	310			
(ft)	(2034')	(1017')			

Drive Technique

All drives frequency controlled squirrel cage motors, fully thermal protected. Hoisting winch Hw 1660 FU, hoisting gear with performance optimization and performance reduction option. Slewing gear with electrically operated weathervaning device. Automatic windforce compensation. Luffing winch Ew 1660 FU.

Electrical Equipment

Multivoltage equipment for supplies from 480 V Y / 277 V 60 Hz.

WOLFF 235 B US · Load Data

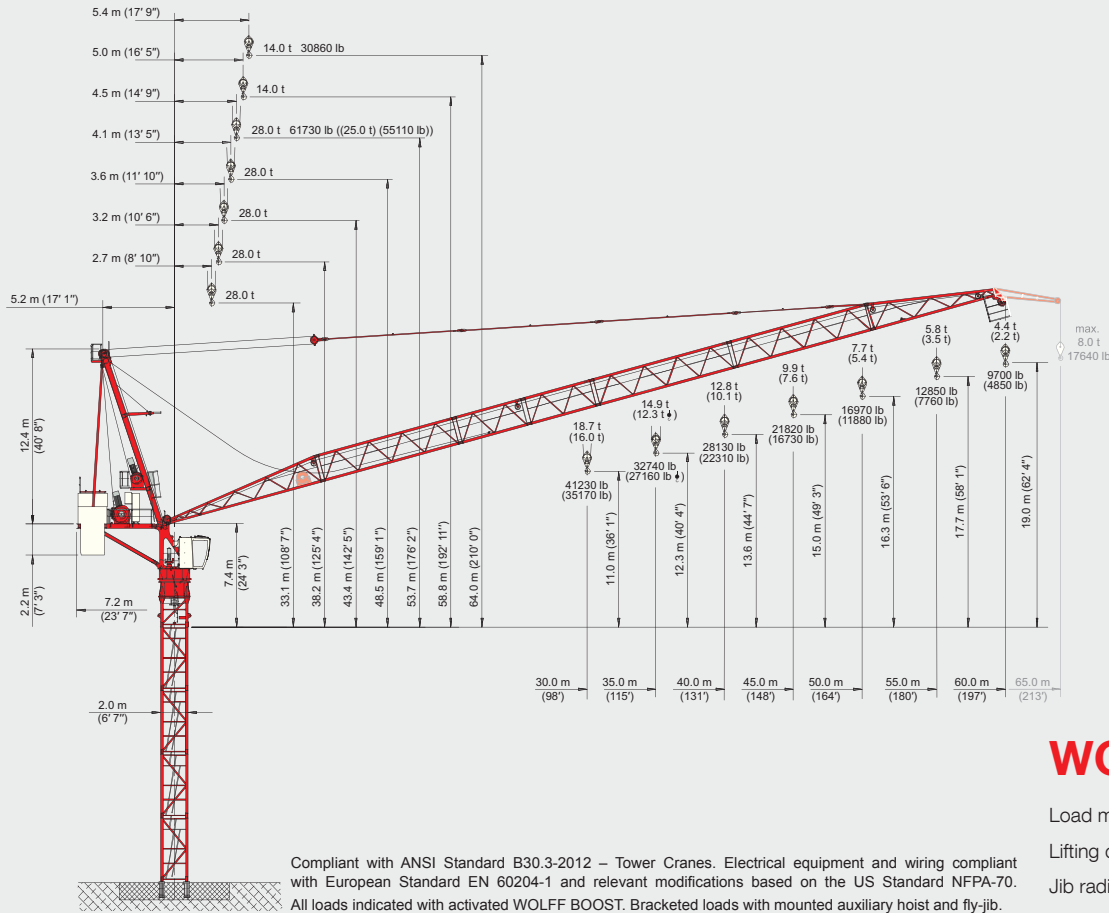
Operating radius [m] (ft)		[m] (ft)	20 (65' 7")	25 (82' 0")	30 (98' 5")	35 (114' 10")	40 (131' 3")	45 (147' 8")	50 (164' 1")	55 (180' 5")	60 (196' 10")
Jib length [m] (ft)	60 (197')	8.0 (17640 lb)	8.0 (17640)	6.7 (14690)	5.2 (11500)	4.1 (9110)	3.3 (7250)	2.6 (5760)	2.1 (4540)	1.6 (3530)	
	55 (180')	8.0 (17640)	8.0 (17640)	7.3 (15990)	5.8 (12700)	4.6 (10230)	3.8 (8310)	3.1 (6770)	2.5 (5510)		
	50 (164')	8.0 (17640)	8.0 (17640)	7.8 (17250)	6.4 (14000)	5.3 (11570)	4.4 (9670)	3.7 (8160)			
	45 (148')	8.0 (17640)	8.0 (17640)	8.0 (17640)	6.9 (15210)	5.8 (12850)	5.0 (11020)				
	40 (131')	8.0 (17640)	8.0 (17640)	8.0 (17640)	7.5 (16480)	6.4 (14110)					
	35 (115')	8.0 (17640)	8.0 (17640)	8.0 (17640)	8.0 (17640)						
Jib length [m] (ft)	30 (98')	8.0 (17640)	8.0 (17640)	8.0 (17640)							
	60 (197')	10.0 (22050 lb)	10.0 (22050)	7.4 (16230)	5.6 (12350)	4.3 (9570)	3.4 (7500)	2.7 (5880)	2.1 (4590)	1.6 (3530)	1.2 (2650)
	55 (180')	12.0 (26460 lb)	10.5 (23210)	7.9 (17370)	6.1 (13480)	4.9 (10700)	3.9 (8610)	3.2 (6990)	2.6 (5690)	2.1 (4630)	
	50 (164')	12.0 (26460 lb)	12.7 (27960)	9.6 (21070)	7.5 (16470)	6.0 (13190)	4.9 (10720)	4.0 (8810)	3.3 (7280)		
	45 (148')	16.0 (35270 lb)	13.3 (29210)	10.1 (22350)	8.1 (17770)	6.6 (14500)	5.5 (12050)	4.6 (10140)			
	40 (131')	16.0 (35270 lb)	13.8 (30370)	10.7 (23520)	8.6 (18940)	7.1 (15680)	6.0 (13230)				
Jib length [m] (ft)	35 (115')	16.0 (35270 lb)	14.3 (31550)	11.3 (24850)	9.3 (20390)	7.8 (17200)					
	30 (98')	16.0 (35270 lb)	14.8 (32600)	11.8 (26000)	9.8 (21600)						

WOLFF 235 B US · Load Data BOOST

Operating radius [m] (ft)		[m] (ft)	20 (65' 7")	25 (82' 0")	30 (98' 5")	35 (114' 10")	40 (131' 3")	45 (147' 8")	50 (164' 1")	55 (180' 5")	60 (196' 10")
Jib length [m] (ft)	60 (197')	8.0 (17640 lb)	8.0 (17640)	8.0 (17640)	6.7 (14690)	5.2 (11500)	4.1 (9110)	3.3 (7250)	2.6 (5760)	2.1 (4540)	1.6 (3530)
	55 (180')	8.0 (17640)	8.0 (17640)	8.0 (17640)	7.3 (15990)	5.8 (12700)	4.6 (10230)	3.8 (8310)	3.1 (6770)	2.5 (5510)	
	50 (164')	8.0 (17640)	8.0 (17640)	8.0 (17640)	7.8 (17250)	6.4 (14000)	5.3 (11570)	4.4 (9670)	3.7 (8160)		
	45 (148')	8.0 (17640)	8.0 (17640)	8.0 (17640)	6.9 (15210)	5.8 (12850)	5.0 (11020)				
	40 (131')	8.0 (17640)	8.0 (17640)	8.0 (17640)	7.5 (16480)	6.4 (14110)					
	35 (115')	8.0 (17640)	8.0 (17640)	8.0 (17640)	8.0 (17640)						
Jib length [m] (ft)	30 (98')	8.0 (17640)	8.0 (17640)	8.0 (17640)							
	60 (197')	10.0 (22050 lb)	10.0 (22050)	8.1 (17850)	6.2 (13590)	4.8 (10530)	3.7 (8250)	2.9 (6470)	2.3 (5050)	1.8 (3880)	1.3 (2920)
	55 (180')	12.0 (26460 lb)	11.6 (25530)	8.7 (19110)	6.7 (14830)	5.3 (11770)	4.3 (9470)	3.5 (7690)	2.8 (6260)	2.3 (5090)	
	50 (164')	12.0 (26460 lb)	14.0 (30760)	10.5 (23180)	8.2 (18120)	6.6 (14510)	5.4 (11790)	4.4 (9690)	3.6 (8010)		
	45 (148')	16.0 (35270 lb)	14.6 (32130)	11.2 (24590)	8.9 (19550)	7.2 (15950)	6.0 (13260)	5.1 (11150)			
	40 (131')	16.0 (35270 lb)	15.2 (33410)	11.7 (25870)	9.5 (20830)	7.8 (17250)	6.6 (14550)				
Jib length [m] (ft)	35 (115')	16.0 (35270 lb)	15.7 (34710)	12.4 (27340)	10.2 (22430)	8.6 (18920)					
	30 (98')	16.0 (35270 lb)	16.0 (35270)	13.0 (28600)	10.8 (23760)						

WOLFF Boost

With the WOLFF Boost function, the load is allowed to exceed the load torque range specified for the lifting capacities by up to 10%. This is, however, subject to the restriction that hoisting gear and luffing gear must only be moved alternately.



WOLFF 355 B US

Load moment: **max. 5100 kNm**

Lifting capacity: **max. 28.0 t (61730 lb)**

Jib radius: **max. 60.0 m (197')**

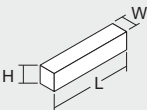
WOLFF 355 B US · Packing List · with auxiliary hoist components

Pos.	Pcs.	Description	Component	Length [m] (ft)	Width [m] (ft)	Height [m] (ft)	Weight [kg] (lb)	Volume [m³] (ft³)
1	1	Tower top upper part		13.36 (43' 10")	2.30 (7' 7")	2.52 (8' 3")	10405 (22939)	77.40 (2733.36)
2	1	Tower top lower part		8.39 (27' 6")	2.30 (7' 7")	2.53 (8' 4")	15320 (33774)	48.82 (1724.06)
				8.58 (28' 2")	2.32 (7' 7")	2.80 (9' 2")	16640 (36685)	55.74 (1968.44)
3	1	Driver's cabin with suspension		2.80 (9' 2")	2.07 (6' 9")	2.81 (9' 3")	1500 (3307)	16.29 (575.28)
4	1	Counterjib (including platforms, struts and standard railings)		6.58 (21' 7")	2.30 (7' 7")	0.93 (3' 1")	4580 (10097)	14.08 (497.23)
5	1	Machinery platform Hw 28110 FU (incl. 1030 m (3379') hoisting rope and 2nd brake)		2.31 (7' 7")	2.19 (7' 2")	2.41 (7' 11")	10815 (23843)	12.12 (428.01)
				4.90 (16' 1")	2.56 (8' 5")	2.81 (9' 3")	11900 (26235)	35.52 (1254.38)
6	1	Jib element 1 (including platforms)		11.92 (39' 1")	2.22 (7' 3")	2.00 (6' 7")	2790 (6151)	52.93 (1869.21)
7	1	Jib element 2 (including WOLFF sign)		10.56 (34' 8")	1.71 (5' 7")	1.96 (6' 5")	1845 (4067)	35.40 (1250.14)
8	1	Jib element 3		5.39 (17' 8")	1.71 (5' 7")	1.96 (6' 5")	980 (2161)	18.07 (638.14)
9	1	Jib element 4		5.39 (17' 8")	1.71 (5' 7")	1.96 (6' 5")	945 (2083)	18.07 (638.14)
10	1	Jib element 5.0		10.56 (34' 8")	1.71 (5' 7")	1.96 (6' 5")	1715 (3781)	35.40 (1250.14)
11	1	Jib element 5.1		10.56 (34' 8")	1.71 (5' 7")	1.96 (6' 5")	1715 (3781)	35.40 (1250.14)
12	1	Jib element 6 (including platforms)		10.16 (33' 4")	1.71 (5' 7")	1.99 (6' 6")	2580 (5688)	34.58 (1221.18)
13	5	Braces (jib) (for 60 m (213') jib)		10.51 (34' 6")	0.24 (0' 9")	0.61 (2' 0")	1375 (3031)	1.54 (54.38)
14	1	Hook block 28 t (61730 lb)		0.68 (2' 3")	0.26 (0' 10")	1.63 (5' 4")	540 (1190)	0.29 (10.24)
15	1	Fly-Jib with hook block 8 t (17640 lb) and platforms		5.91 (19' 5")	1.27 (4' 2")	1.16 (3' 10")	1260 (2778)	8.71 (307.59)
16	1	Auxiliary hoist switch cabinet with standard railings		2.08 (6' 10")	1.76 (5' 9")	2.16 (7' 1")	880 (1940)	7.91 (279.34)
17	1	Auxiliary hoisting gear Hw 1675 FU with platforms		2.39 (7' 10")	1.10 (3' 7")	1.03 (3' 5")	3327 (7335)	2.71 (95.70)
18	2	Support pulleys for auxiliary hoist rope		1.77 (5' 10")	1.04 (3' 5")	1.22 (4' 0")	190 (419)	2.25 (79.46)
19	5	Suspended concrete weight with steel edge protection (Suitable for Hw28110FU and Hw28132FU)		2.10 (6' 11")	0.54 (1' 9")	3.45 (11' 4")	8000 (17637)	3.91 (138.08)
20	1	Lying concrete weight with steel edge protection (Suitable for Hw28110FU only)		2.15 (7' 1")	1.70 (5' 7")	1.09 (3' 7")	8000 (17637)	3.98 (140.55)
21	1	Lying concrete weight with steel edge protection (Suitable for Hw28132FU only)		2.15 (7' 1")	1.70 (5' 7")	0.87 (2' 10")	6200 (13669)	3.18 (112.3)

Steel counterweights available!



Der Leitwolf. The leader of the pack.



Dimensions collist



Main Components

30 m (98') basic jib with hoist drive. Extensions up to 60 m (197') radius in 5 m (16') steps. Towntop with luffing winch. Slewing frame with driver's cabin, control cabinet, slewing gear, ball race bearing with central lubrication unit and slipping system. Counter-jib with hoisting winch and counterweights.

Drive Technique

All drives frequency controlled squirrel cage motors, and thermal motor protection. Hoisting winch Hw 28110 FU (147 hp) / Hw 28132 FU (177 hp). Slewing gear with electrically operated weathervaning device. Automatic windforce compensation controls. Luffing winch Ew 1575 FU (100 hp).

Electrical Equipment

Multivoltage equipment for supplies from 380 V to 460 V at 50/60 cycles. Electronic safety crane controls with bus technology. Incremental absolute encoders for all operating movements. Electronic load measuring. Multilingual graphic display with touchscreen. Wind indicator and signal lights.

Safety Devices

Electronic overload protection system. Increase of load moment limitation by automatically hoisting speed reduction. Menu guided setting of overload protection system and all limiters from operators cabin. Working space limiter. Anti-collision interface. Electronically controlled level luffing. Standard with remote data transmission module and wind indicator.

Tower Elements, Climbing Device

Tower configuration of WOLFF system tower elements. WOLFF slug bolt connection. Detachable hydraulic WOLFF system climbing device KWH 20.6.

Crane Basis

On foundation anchors. Alternatively on stationary elements of the WOLFF KRE series. Cross Frame Elements of the KRE series can be modified to travelling WOLFF Undercarriages of the UW series. Both with gauges from 6.0 m (20') up to 8.0 m (26').

Operating Speeds Hw 28110 FU

Motor	[kw] (hp)	110 (147)	110 (147)	75 (100)	7.5 (10)	6 x 5.5 (6 x 7.4)	75 (100)
Speed		0 - 2.5 t (0 - 5510 lb) 0 ... 185 m/min (0 ... 607 ft/min)	0 - 5.5 t (0 - 12120) 0 ... 92 m/min (0 ... 302 ft/min)	1.8 min	0.8 min ⁻¹	25 m/min (82 ft/min)	0 - 2.1 t (0 - 4630) 0 ... 140 m/min (0 ... 459 ft/min)
		stepless	stepless			stepless	stepless
		0 - 14.0 t (0 - 30860 lb) 0 ... 40 m/min (0 ... 131 ft/min)	0 - 28.0 t (0 - 61730 lb) 0 ... 20 m/min (0 ... 66 ft/min)				0 - 8.0 t (0 - 17640 lb) 0 ... 46 m/min (0 ... 151 ft/min)
Hook path	[m] (ft)	920 (3018)	460 (1509)				600 (1969)

Operating Speeds Hw 28132 FU

Motor	[kw] (hp)	132 (177)	132 (177)	75 (100)	7.5 (10)	6 x 5.5 (6 x 7.4)	75 (100)
Speed		0 - 1.7 t (0 - 3750 lb) 0 ... 290 m/min (0 ... 951 ft/min)	0 - 4.0 t (0 - 8820) 0 ... 146 m/min (0 ... 479 ft/min)	1.8 min	0.8 min ⁻¹	25 m/min (82 ft/min)	0 - 2.1 t (0 - 4630) 0 ... 140 m/min (0 ... 459 ft/min)
		stepless	stepless				stepless
		0 - 14.0 t (0 - 30860 lb) 0 ... 48 m/min (0 ... 158 ft/min)	0 - 28.0 t (0 - 61730 lb) 0 ... 25 m/min (0 ... 82 ft/min)				0 - 8.0 t (0 - 17640 lb) 0 ... 46 m/min (0 ... 151 ft/min)
Hook path	[m] (ft)	920 (3018)	460 (1509)				600 (1969)

WOLFF 355 B US · Load Data BOOST · without mounted fly-jib

Jib radius [m] (ft)	Jib length [m] (ft)										Load capacity [t] (lb)
	20 (65' 7")	25 (82')	30 (98' 5")	35 (114' 10")	40 (131' 3")	45 (147' 8")	50 (164' 1")	55 (180' 5")	60 (196' 10")		
60 (197')	5.4 - 29.0 (17' 9" - 95' 3")	14.0 (30860)	14.0 (30860)	13.4 (29550)	10.8 (23870)	8.9 (19620)	7.4 (16310)	6.2 (13670)	5.2 (11510)	4.4 (9700)	
55 (180')	5.0 - 30.2 (16' 5" - 99')	14.0 (30860)	14.0 (30860)	14.0 (30860)	11.5 (25360)	9.6 (21050)	8.0 (17710)	6.8 (15040)	5.8 (12850)		
50 (164')	4.5 - 31.9 (14' 9" - 104' 7")	14.0 (30860)	14.0 (30860)	14.0 (30860)	12.5 (27450)	10.5 (23080)	8.9 (19690)	7.7 (16970)			
45 (148')	4.1 - 33.7 (13' 5" - 110' 5")	14.0 (30860)	14.0 (30860)	14.0 (30860)	13.4 (29490)	11.4 (25180)	9.9 (21820)				
40 (131')	3.6 - 36.7 (11' 10" - 120' 3")	14.0 (30860)	14.0 (30860)	14.0 (30860)	14.0 (30860)	12.8 (28130)					
35 (115')	3.2 - 35.0 (10' 6" - 114' 10")	14.0 (30860)	14.0 (30860)	14.0 (30860)	14.0 (30860)						
30 (98')	2.7 - 30.0 (8' 10" - 98' 5")	14.0 (30860)	14.0 (30860)	14.0 (30860)							
60 (197')	-	-	-	-	-	-	-	-	-	-	
55 (180')	-	-	-	-	-	-	-	-	-	-	
50 (164')	4.5 - 17.4 (14' 9" - 57' 2")	23.9 (52710)	18.4 (40560)	14.7 (32450)	12.1 (26660)	10.1 (22330)	8.6 (18950)	7.4 (16250)			
45 (148')	4.1 - 18.0 (13' 5" - 59' 1")	24.9 (54970)	19.4 (42780)	15.7 (34650)	13.1 (28840)	11.1 (24490)	9.6 (21100)				
40 (131')	3.6 - 18.6 (11' 10" - 61' 2")	26.0 (57330)	20.6 (45360)	17.0 (37380)	14.4 (31680)	12.4 (27400)					
35 (115')	3.2 - 19.2 (10' 6" - 62' 11")	26.8 (59110)	21.2 (46810)	17.5 (38600)	14.9 (32740)						
30 (98')	2.7 - 19.8 (8' 10" - 65' 1")	27.8 (61240)	22.3 (49230)	18.7 (41230)							

WOLFF 355 B US · Load Data BOOST · with mounted fly-jib

Jib radius [m] (ft)	Jib length [m] (ft)										Load capacity [t] (lb)
	20 (65' 7")	25 (82')	30 (98' 5")	35 (114' 10")	40 (131' 3")	45 (147' 8")	50 (164' 1")	55 (180' 5")	60 (196' 10")		
60 (197')	5.4 - 26.1 (17' 9" - 85' 9")	14.0 (30860)	14.0 (30860)	11.3 (24940)	8.7 (19200)	6.8 (14890)	5.2 (11550)	4.0 (8870)	3.0 (6680)	2.2 (4850)	
55 (180')	5.0 - 26.9 (16' 5" - 88' 4")	14.0 (30860)	14.0 (30860)	11.9 (26210)	9.3 (20420)	7.3 (16070)	5.8 (12680)	4.5 (9980)	3.5 (7760)		
50 (164')	4.5 - 28.1 (14' 9" - 92' 1")	14.0 (30860)	14.0 (30860)	12.7 (28080)	10.1 (22300)	8.1 (17950)	6.6 (14590)	5.4 (11880)			
45 (148')	4.1 - 29.7 (13' 5" - 97' 4")	14.0 (30860)	14.0 (30860)	13.8 (30390)	11.1 (24540)	9.1 (20150)	7.6 (16730)				
40 (131')	3.6 - 31.3 (11' 10" - 102' 8")	14.0 (30860)	14.0 (30860)	14.0 (30860)	12.1 (26700)	10.1 (22310)					
35 (115')	3.2 - 31.8 (10' 6" - 104' 3")	14.0 (30860)	14.0 (30860)	14.0 (30860)	12.3 (27160)						
30 (98')	2.7 - 30.0 (8' 10" - 98' 5")	14.0 (30860)	14.0 (30860)	14.0 (30860)							
60 (197')	-	-	-	-	-	-	-	-	-	-	
55 (180')	-	-	-	-	-	-	-	-	-	-	
50 (164')	4.5 - 17.8 (14' 9" - 58' 6")	21.6 (47710)	16.1 (35520)	12.4 (27400)	9.8 (21590)	7.8 (17250)	6.3 (13860)	5.1 (11150)			
45 (148')	4.1 - 18.8 (13' 5" - 55' 2")	22.7 (50090)	17.2 (37820)	13.4 (29630)	10.8 (23790)	8.8 (19420)	7.3 (16010)				
40 (131')	3.6 - 17.3 (11' 10" - 56' 9")	23.7 (52140)	18.1 (39920)	14.4 (31770)	11.8 (25950)	9.8 (21580)					
35 (115')	3.2 - 17.7 (10' 6" - 58' 1")	24.3 (53550)	18.6 (40890)	14.7 (32460)	12.0 (26430)						
30 (98')	2.7 - 18.1 (8' 10" - 59' 6")	25.2 (55440)	19.6 (43270)	16.0 (35170)							

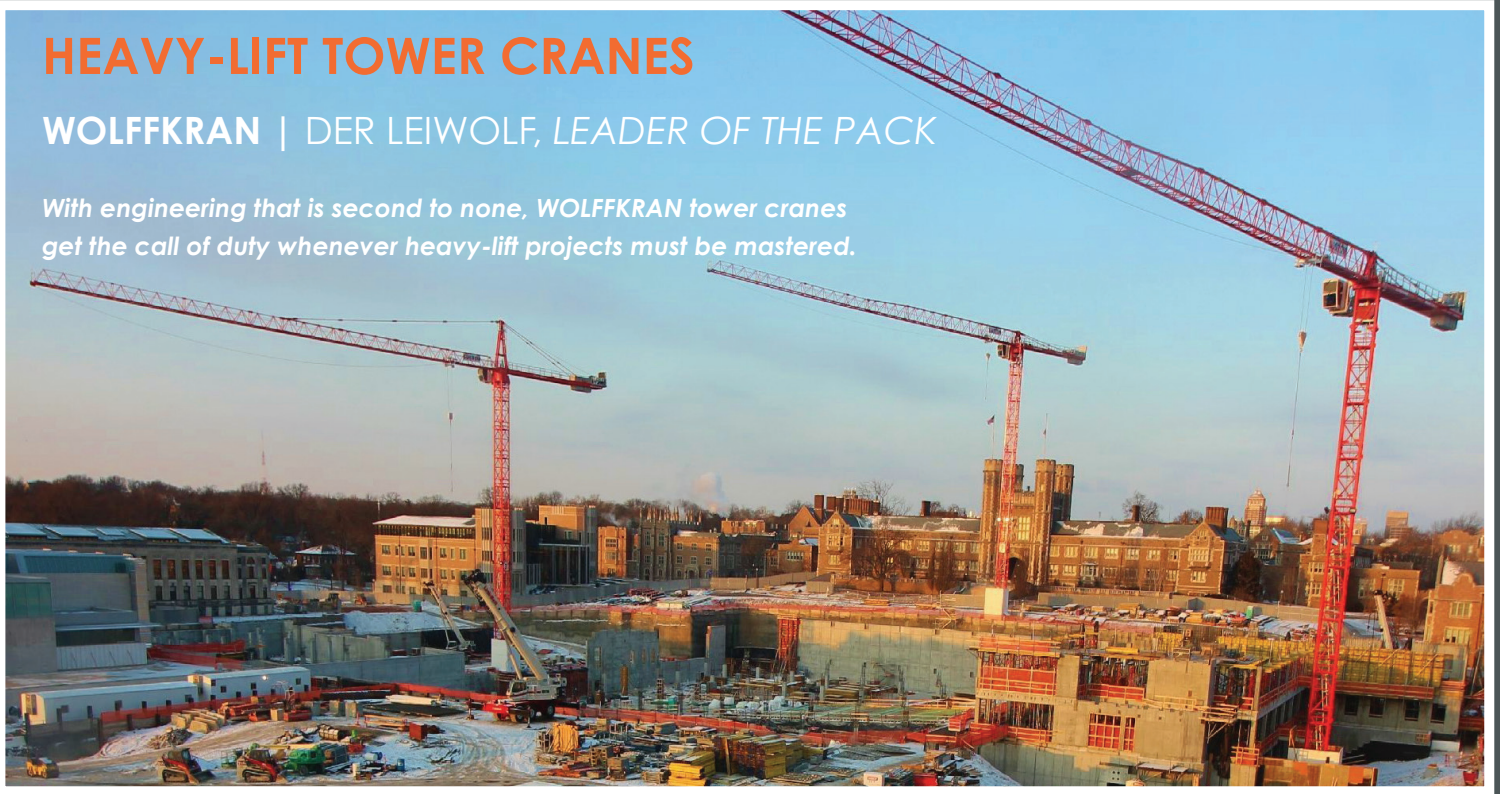
WOLFF-Boost

With the WOLFF-Boost function, the load is allowed to exceed the load torque range specified for the lifting capacities by up to 10%. This is, however, subject to the restriction that hoisting gear and luffing gear must only be moved alternately.

HEAVY-LIFT TOWER CRANES

WOLFFKRAN | DER LEIWOLF, LEADER OF THE PACK

With engineering that is second to none, WOLFFKRAN tower cranes get the call of duty whenever heavy-lift projects must be mastered.



HEAVY-LIFT SET UP OPTIONS



Embed bolt foundation



6-8 meter base on concrete engineered mats

WOLFFKRAN large heavy-lift cranes can utilize the same mobile base technology for projects that are short in durations or that have site constraints.



EQUIPMENT

- City Type Tower Cranes
- Heavy-Lift Tower Cranes
- Heavy-Lift Hydraulic Cranes
- Rough Terrain Cranes
- Cary Deck & Mini Cranes
- All-Terrain Forklift Rental
- Rigging Forklifts

SERVICES

- Tower Crane Services
- Tower Crane Sales
- Factory-Trained Technicians
- Operated Cranes
- Bare Rental Cranes
- Rigging Service
- Concrete Pumps & Belts



www.CUSTOMSERVICECRANE.COM

24/7 Service in the Midwest Region

FISHER, IL
217-897-1700

MAHOMET, IL
217-586-5697

URBANA, IL
217-469-7097

ST. LOUIS, MO
636-939-9818

DECATUR, IL
217-768-3900

BLOOMINGTON, IL
309-829-1230

SHIPPING &
WAREHOUSING
ADDRESS:

639 CR 3000 N
PO BOX 267
FISHER, IL 61843

Member Associations

