



70 USt



157 ft



155 ft



207 ft

Ideally prepared for any road

LTM 1060-3.1

Mobile crane
Grue mobile

LIEBHERR

Mobile and crawler cranes



Technical data

Caractéristiques technique

Dimensions

Encombrement 3

Mobile crane

Grue mobile 4-5

High performance boom with single cylinder system

Une flèche encore plus puissante avec un système à un vérin 6

Counterweight

Contrepoids 6

On-road driving

Déplacement sur route 7

Jobsite driving

Déplacement sur chantier 7

Crane data

Dates de la grue 8

Boom/jib combinations

Configurations de flèche 9

T 10-16

TK 17-23

TK 24-27

Equipment

Équipement 28-29

Description of symbols

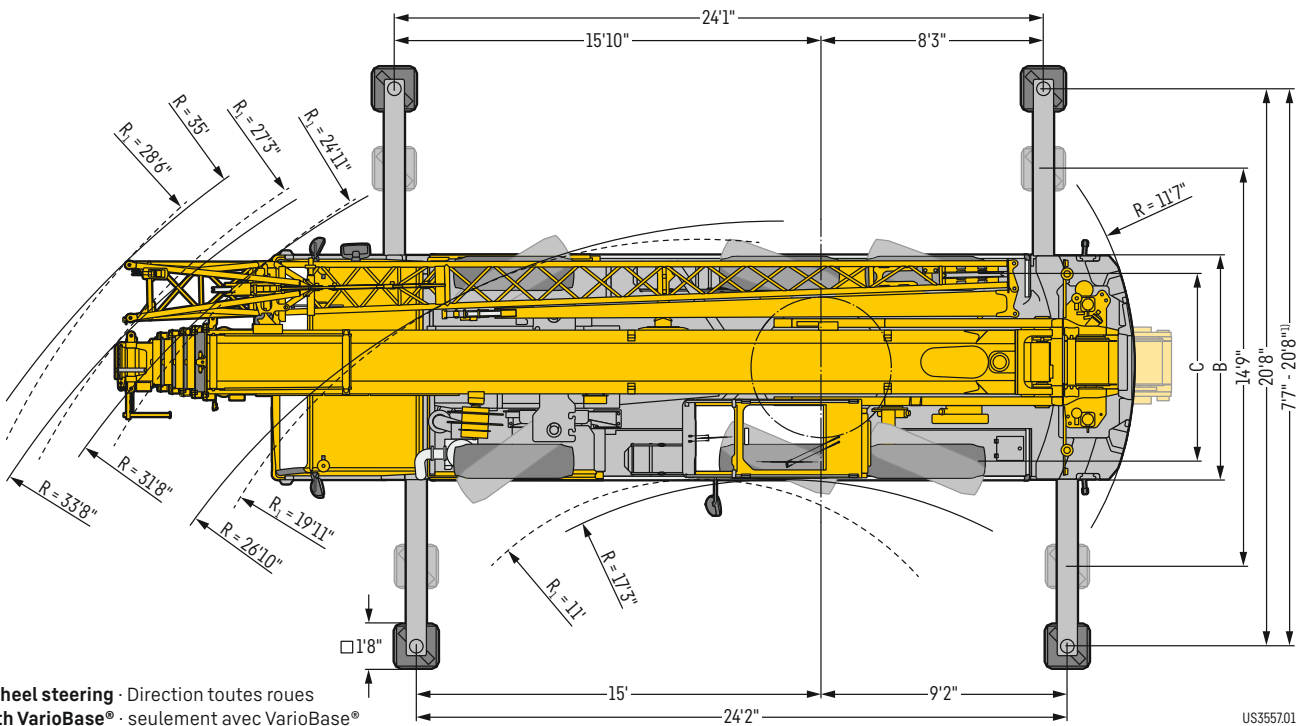
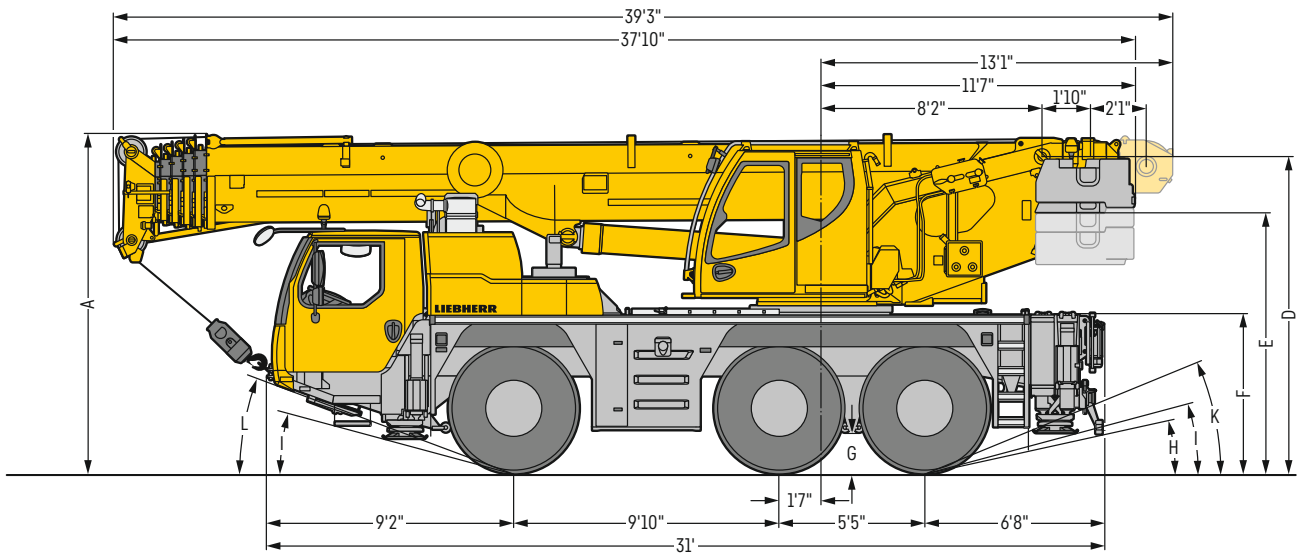
Explication des symboles 30

Remarks

Remarques 31

Dimensions

Encombrement



R₁ = All-wheel steering · Direction toutes roues
¹⁾ only with VarioBase® · seulement avec VarioBase®

US355701

Dimensions · Encombrement

	A	A ₄ **	B	C	D	E	F	G	H	I	K	L
445/95 R 25 (16.00 R 25)	12'6"	12'2"	8'4"	6'11"	11'8"	9'7"	5'9"	1'5"	12°	15°	23°	21°
525/80 R 25 (20.5 R 25)	12'6"	12'2"	8'10"	7'1"	11'8"	9'7"	5'9"	1'5"	12°	15°	23°	21°

* lowered · abaissé

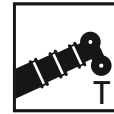
LTM 1060-3.1



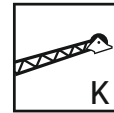


Hillstart Aid makes starting on gradients easier. Move off safely and easily without rolling backwards.

La fonction Hillstart-Aid facilite le démarrage en côte. Démarrage sûr et facile sans recul du véhicule.



157 ft



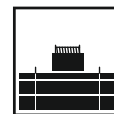
31 ft - 52 ft



8 ft 4 in (445/95 R 25)



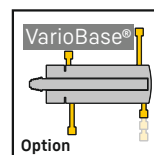
8 ft



28,200 lb

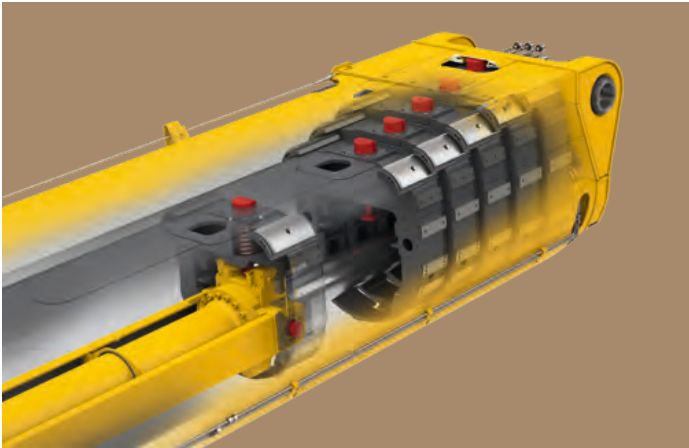


270 kW (367 h.p.)



High performance boom with single cylinder system

Une flèche encore plus puissante avec un système à un vérin



- Automatic fast cycle telescoping system TELEMATIK
- High capacities over the complete working range
- Système de télescopage séquentiel rapide automatique TELEMATIK
- Forces de levage élevées sur l'ensemble de la zone de travail

Counterweight

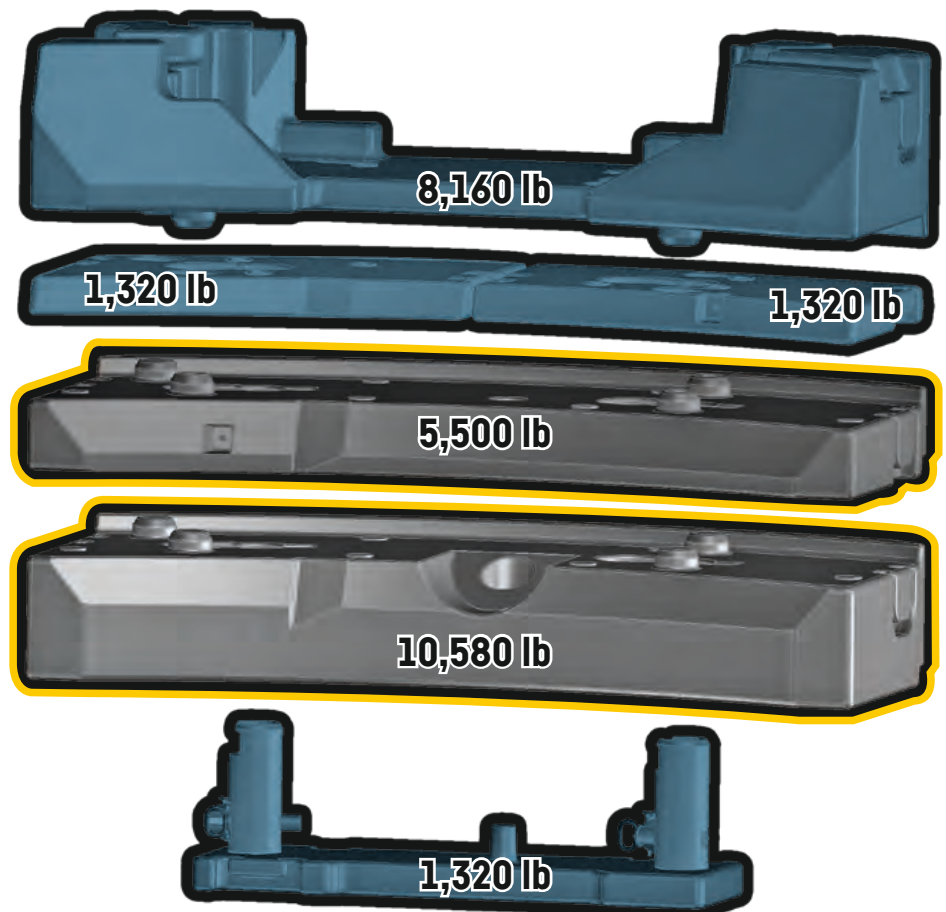
Contrepoids



26,450 lb axle load
26,450 lb de charge par essieu

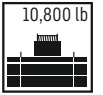
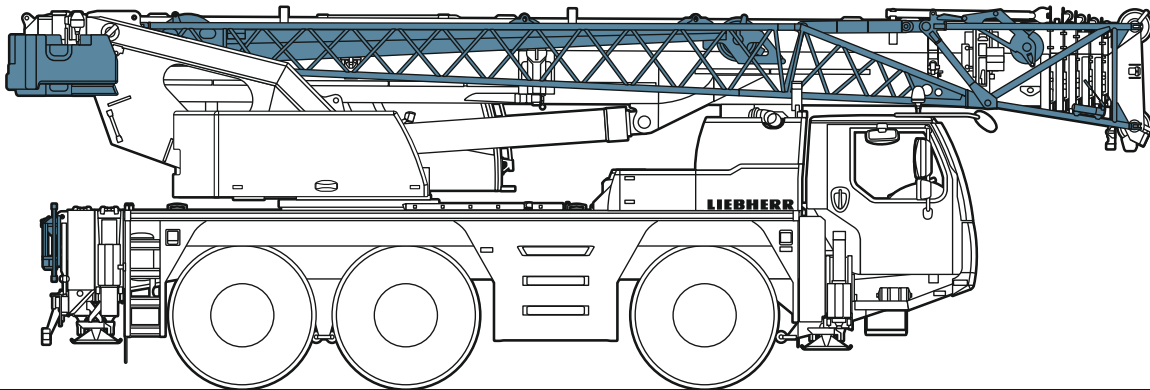
Technically transportable
Transport techniquement simplifié

Additional counterweight
Contrepoids additionnel



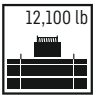
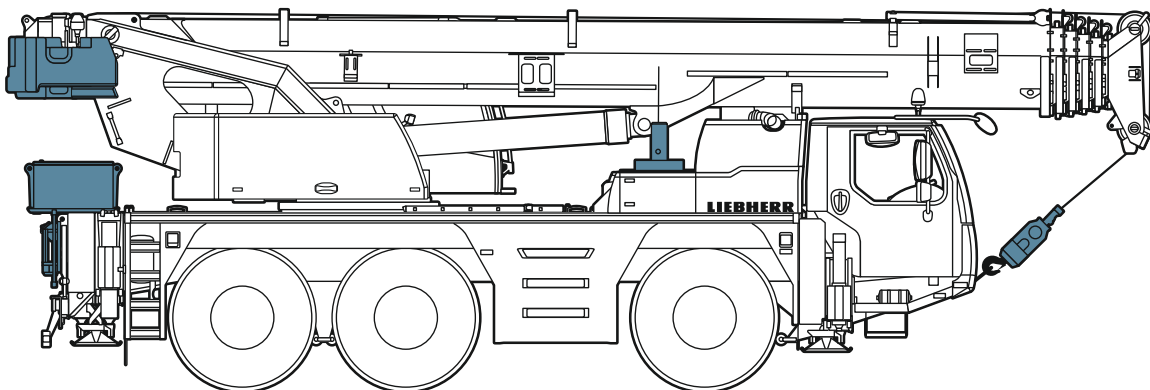
On-road driving

Déplacement sur route



≤ 79,400 lb

≤ 26,450 lb ≤ 26,450 lb ≤ 26,450 lb

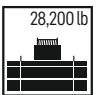
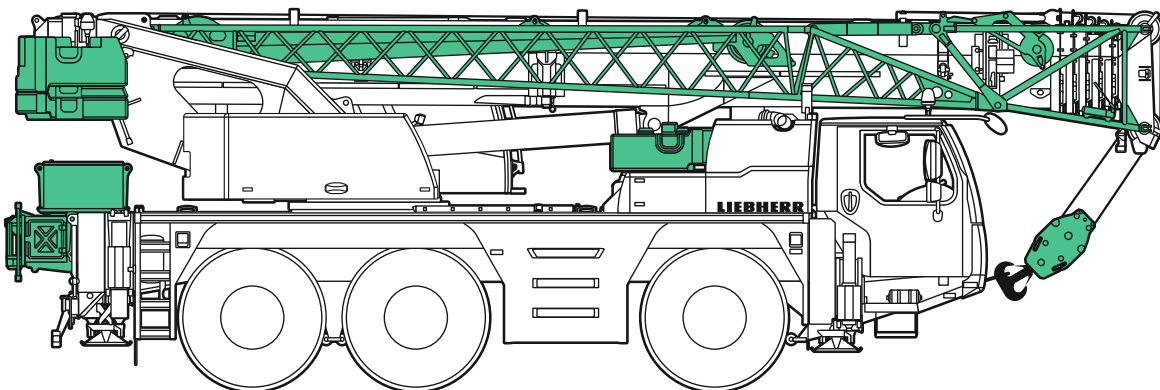


≤ 79,400 lb

≤ 26,450 lb ≤ 26,450 lb ≤ 26,450 lb

Jobsite driving

Déplacement sur chantier



≤ 101,500 lb





≤ 34,200 lb ≤ 34,200 lb ≤ 34,200 lb

US3547









Crane data

Dates de la grue

Hook block · Moufles à crochet




			
132,270 lb	7	15	880 lb
101,630 lb	5	11	880 lb
66,580 lb	3	7	620 lb
29,300 lb	1	3	440 lb
9,920 lb	-	1	220 lb

Crane carrier · Châssis porteur











	 mph min.	 mph max.	 %		
445/95 R 25 (16.00 R 25)	0.4	53	> 60%		12 / R2
525/80 R 25 (20.5 R 25)	0.4	53	> 60%		4 / R2

Theoretical gradeability · aptitude théorique en pente

Max. supporting forces · Forces d'appui max.

		
F _{max}	63,000 lb	100,000 lb

Crane superstructure · Partie tournante

				
	0 - 427 ft/min single line · au brin simple	15 mm	722 ft	10,100 lb
	0 - 427 ft/min single line · au brin simple	15 mm	722 ft	10,100 lb
	0 - 1,5 rpm			
	approx. 60 seconds to reach 82° boom angle env. 60 s jusqu'à 82°			
	approx. 405 seconds for boom extension from 34 ft - 157 ft env. 405 s pour passer de 34 ft - 157 ft			

Boom/jib combinations

Configurations de flèche

- T** **Telescopic boom** · Flèche télescopique
- K** **Mechanical swing away jib** · Flechette pliante mecanique
- K** **Assembly jib** · Fléchette de montage

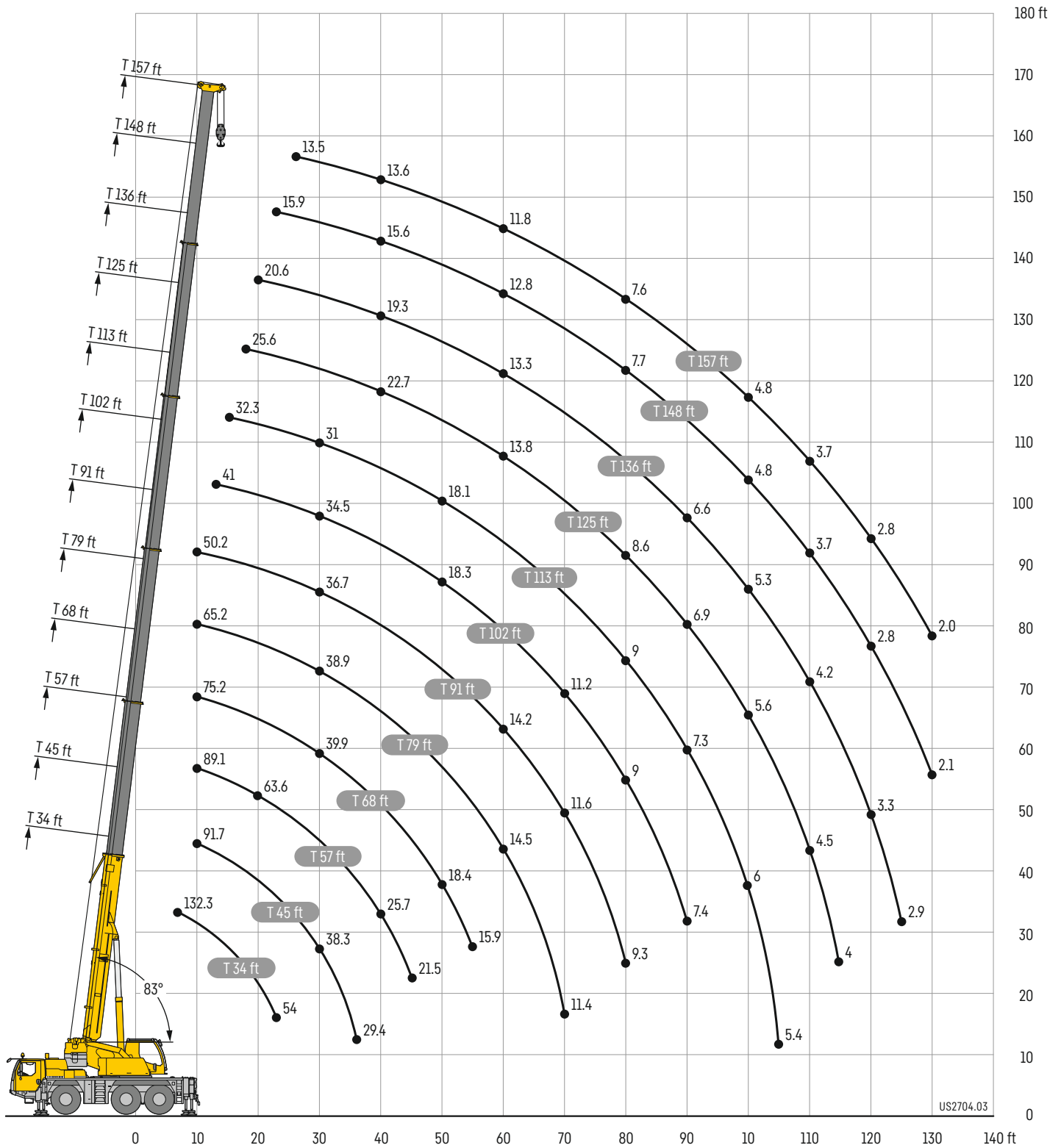


S3145.01

Lifting heights

Hauteurs de levage

T



Lifting capacities

Forces de levage

T



	34 ft	45 ft	57 ft	68 ft	79 ft	91 ft	102 ft	113 ft	125 ft	136 ft	148 ft	157 ft		
7	*												7	
8	132.3												8	
9	129.1												9	
10	124.3												10	
11	119.6	93.3	91.7	89.1	75.2	65.2	50.2						11	
12	113.5	93.3	92.7	89.7	75.7	65.8	50.8						12	
13	106.1	93.3	91.8	89.8	76.1	66.5	51.4						13	
14	99	89.8	89.2	84.6	76.6	66.7	52	41					14	
15	92.5	85.3	84.6	79.7	75.4	66.3	52.5	41.4					15	
16	86.5	80.9	80.3	76.2	72.3	65.9	53	41.7	32.3				16	
17	81.6	76.9	76.8	73.7	69.1	65.4	53.1	42	32.6				17	
18	78.3	73.2	74	70.8	67.4	64.1	53	42.1	32.8				18	
19	75	69.4	70.3	69.3	65.3	61.9	52.8	42.2	33	25.6			19	
20	71.8	65.7	66.7	66.8	63.5	60	52.5	42.3	33.1	25.8			20	
22	68.6	62.2	63.2	63.6	61.6	58.2	52.2	42.2	33.1	26	20.6		22	
24	62.1	56.1	57	57.5	57.2	54.6	51.6	41.6	33.4	26.3	20.8	15.9	24	
26	54	50.4	51.5	51.9	51.7	51.1	48.3	40.6	33.3	26.5	21	16	26	
28			46.7	47.1	47.3	46.7	43.9	39.3	32.8	26.7	21.2	16.2	13.5	28
30			42.2	42.8	43.7	42.5	40	37.6	32	26.6	21.3	16.4	13.6	30
32			38.3	39.6	39.9	38.9	36.7	34.5	31	26.2	21.4	16.4	13.7	32
34			34.8	36.2	36.4	35.8	33.8	32	29.9	25.7	21.1	16.4	13.8	34
36			32.1	33	33.2	32.9	31.2	30.1	28.5	25	20.8	16.3	13.8	36
38			29.4	30.2	30.4	30.1	29.1	27.9	26.8	24.3	20.4	16.1	13.8	38
40				27.8	28	27.7	27	26.2	25.5	23.5	19.9	15.8	13.8	40
45				25.7	25.9	25.6	25.2	25.2	24.1	22.7	19.3	15.6	13.6	45
50				21.5	21.6	21.3	22	21.4	21	19.8	18.2	15	13.2	50
55				18.4	19.1	18.7	18.3	18.1	17.4	17.4	17	14.3	12.8	55
60				15.9	16.5	16.2	15.8	16	15.8	14.8	14.8	13.6	12.3	60
65					14.5	14.2	14.4	14	13.8	13.3	13.3	12.8	11.8	65
70					12.8	12.6	12.7	12.3	12.3	12.3	12.1	11.3	11	70
75					11.4	11.6	11.2	11.3	10.9	10.7	10.7	9.9	9.7	75
80						10.4	10	10.1	9.7	9.3	9.3	8.7	8.6	80
85						9.3	9	9	8.6	8.3	8.3	7.7	7.6	85
90							8.2	8.1	7.7	7.4	7.4	6.8	6.8	90
95							7.4	7.3	6.9	6.6	6.6	6.1	6	95
100								6.6	6.2	5.9	5.9	5.4	5.3	100
105								6	5.6	5.3	5.3	4.8	4.8	105
110								5.4	5	4.7	4.7	4.2	4.2	110
115									4.5	4.2	4.2	3.7	3.7	115
120									4	3.7	3.7	3.2	3.2	120
125										3.3	3.3	2.8	2.8	125
130											2.9	2.4	2.4	130
135												2.1	2	135

* 0° = over rear · sur arrière

t_250_00101_00_000 / t_250_00501_00_000

Lifting capacities

Forces de levage

T



	34 ft	45 ft	57 ft	68 ft	79 ft	91 ft	102 ft	113 ft	125 ft	136 ft	148 ft	157 ft	
10	93.3	91.7	89.1	75.2	65.2	50.2							10
11	93.3	92.7	89.7	75.7	65.8	50.8							11
12	93.3	93.2	89.8	76.1	66.5	51.4							12
13	93.3	92.5	84.6	76.6	66.7	52	41						13
14	92.3	87.4	79.7	75.4	66.3	52.5	41.4						14
15	86.5	82.6	76.2	72.3	65.9	53	41.7	32.3					15
16	81.6	79	73.7	69.1	65.4	53.1	42	32.6					16
17	78.3	76.3	70.8	67.4	64.1	53	42.1	32.8					17
18	75	73.5	69.7	65.3	61.9	52.8	42.2	33	25.6				18
19	71.8	70.9	67.7	63.5	60	52.5	42.3	33.1	25.8				19
20	68.5	68.5	65.9	61.6	58.2	52.2	42.2	33.1	26	20.6			20
22	62.1	63.3	61.8	58.4	54.6	51.6	41.6	33.4	26.3	20.8	15.9		22
24	54	56.2	55.8	52.6	51.1	48.3	40.6	33.3	26.5	21	16		24
26		49	49.6	47.4	46.7	43.9	39.3	32.8	26.7	21.2	16.2	13.5	26
28		43.3	43.9	44.5	42.5	40	37.6	32	26.6	21.3	16.4	13.6	28
30		38.6	39.9	40.4	38.9	36.7	34.5	31	26.2	21.4	16.4	13.7	30
32		34.8	36.3	36.5	35.8	33.8	32	29.9	25.7	21.1	16.4	13.8	32
34		32.1	33	33.2	32.9	31.2	30.1	28.5	25	20.8	16.3	13.8	34
36		29.4	30.2	30.4	30.1	29.1	27.9	26.8	24.3	20.4	16.1	13.8	36
38			27.8	28	27.7	27	26.2	25.5	23.5	19.9	15.8	13.8	38
40			25.7	25.9	25.6	25.2	25.2	24.1	22.7	19.3	15.6	13.6	40
45			21.5	21.6	21.3	22	21.4	21	19.8	18.2	15	13.2	45
50				18.4	19.1	18.7	18.3	18.1	17.4	17.1	14.3	12.8	50
55				15.9	16.5	16.2	15.8	16	15.9	15	13.6	12.3	55
60					14.5	14.2	14.4	14	13.8	13.4	12.9	11.8	60
65					12.8	12.6	12.7	12.4	12.3	12.2	11.5	11.1	65
70					11.5	11.7	11.3	11.4	11	10.8	10.1	9.9	70
75						10.5	10.2	10.2	9.8	9.5	8.9	8.8	75
80						9.5	9.1	9.1	8.8	8.5	7.9	7.8	80
85							8.4	8.3	7.9	7.6	7	7	85
90							7.6	7.5	7.1	6.8	6.3	6.2	90
95								6.8	6.4	6.1	5.6	5.5	95
100								6.1	5.7	5.5	5	5	100
105								5.6	5.1	4.9	4.4	4.4	105
110									4.6	4.4	3.9	3.9	110
115									4.2	3.9	3.4	3.4	115
120										3.5	3	3	120
125										3.1	2.6	2.6	125
130											2.2	2.2	130
135											1.9	1.9	135

t_250_00201_00_000

Lifting capacities

Forces de levage

T

34 - 157 ft

360°

17,600 lb

85%

	34 ft	45 ft	57 ft	68 ft	79 ft	91 ft	102 ft	113 ft	125 ft	136 ft	148 ft	157 ft	
10	93.3	91.7	89.1	75.2	65.2	50.2							10
11	93.3	92.7	89.7	75.7	65.8	50.8							11
12	92.9	91.3	89.8	76.1	66.5	51.4							12
13	88.6	87.9	84.6	76.6	66.7	52	41						13
14	83.8	83.1	79.7	75.4	66.3	52.5	41.4						14
15	79.1	78.8	76.2	72.3	65.9	53	41.7	32.3					15
16	74	75.1	73.3	69.1	65	53.1	42	32.6					16
17	69.6	70.5	69.5	66.8	62.1	53	42.1	32.8					17
18	65.4	66.5	66.6	62.5	58.6	52.8	42.2	33	25.6				18
19	61.3	62.5	62.2	58.3	55.9	51.1	42.3	33.1	25.8				19
20	57.6	58.8	58.1	54.1	52.6	48.9	42.2	33.1	26	20.6			20
22	50.6	51.9	50.8	49.4	46.5	43.4	40.2	33.4	26.3	20.8	15.9		22
24	44.1	45.5	45.8	44.2	41.6	38.8	36.9	33.3	26.5	21	16		24
26		39.6	41.3	39.8	37.6	35.4	33.5	31.4	26.7	21.2	16.2	13.5	26
28		35.5	36.5	36.1	34.2	32.2	30.9	29.7	26.6	21.3	16.4	13.6	28
30		31.6	32.6	32.7	31.1	29.4	28.8	27.5	25.6	21.4	16.4	13.7	30
32		28.4	29.3	29.5	28.4	27.6	26.5	25.3	23.7	21.1	16.4	13.8	32
34		25.7	26.6	26.8	26.1	26	24.6	23.3	21.8	20.8	16.3	13.8	34
36		23.4	24.2	24.4	24.2	24.2	22.7	21.8	21	19.8	16.1	13.8	36
38			22.2	22.4	23	22.4	21.1	20.7	19.8	18.5	15.8	13.8	38
40			20.3	20.5	21.3	20.8	19.6	19.3	18.5	17.2	15.6	13.6	40
45			16.7	17.6	17.6	17.2	17.5	16.5	15.9	15.2	14.3	13.2	45
50				14.8	14.8	15.1	14.8	14.6	13.8	13.2	12.2	11.9	50
55				12.7	12.6	12.9	12.7	12.6	12	11.4	10.5	10.2	55
60					10.9	11.2	11	10.9	10.5	9.9	9	8.8	60
65					9.5	9.8	9.5	9.4	8.9	8.5	7.8	7.6	65
70					8.4	8.6	8.4	8.2	7.7	7.4	6.8	6.5	70
75						7.6	7.4	7.3	6.8	6.4	5.8	5.7	75
80						6.8	6.5	6.4	5.9	5.6	5.1	4.9	80
85							5.7	5.6	5.2	4.9	4.4	4.2	85
90							5.1	5	4.6	4.3	3.8	3.6	90
95								4.4	4	3.7	3.2	3.1	95
100								3.8	3.4	3.2	2.7	2.6	100
105								3.4	3	2.7	2.2	2.2	105
110									2.6	2.3	1.8	1.8	110
115									2.2	1.9			115

t_250_00507_01_000

34 - 157 ft

±10°

17,600 lb

85%

	34 ft	45 ft	57 ft	68 ft	79 ft	91 ft	102 ft	113 ft	125 ft	136 ft	148 ft	157 ft	
10	93.3	91.7	89.1	75.2	65.2	50.2							10
11	93.3	92.7	89.7	75.7	65.8	50.8							11
12	93.3	93.2	89.8	76.1	66.5	51.4							12
13	93.3	92.5	84.6	76.6	66.7	52	41						13
14	91.4	87.4	79.7	75.4	66.3	52.5	41.4						14
15	86.2	82.6	76.2	72.3	65.9	53	41.7	32.3					15
16	81.4	79	73.3	69.1	65	53.1	42	32.6					16
17	76.9	76.1	70.3	66.8	62.1	53	42.1	32.8					17
18	72.1	71.4	67.4	62.5	58.6	52.8	42.2	33	25.6				18
19	67.5	66.3	62.3	58.3	55.9	51.1	42.3	33.1	25.8				19
20	62.2	61.5	58.1	54.1	52.6	48.9	42.2	33.1	26	20.6			20
22	51.7	53.4	50.8	49.4	46.5	43.4	40.2	33.4	26.3	20.8	15.9		22
24	44.1	45.6	45.8	44.2	41.6	38.8	36.9	33.3	26.5	21	16		24
26		39.6	41.3	39.8	37.6	35.4	33.5	31.4	26.7	21.2	16.2	13.5	26
28		35.5	36.5	36.1	34.2	32.2	30.9	29.7	26.6	21.3	16.4	13.6	28
30		31.6	32.6	32.7	31.2	29.5	29	27.7	25.7	21.4	16.4	13.7	30
32		28.4	29.3	29.5	28.6	27.6	26.7	25.6	24.1	21.1	16.4	13.8	32
34		25.7	26.6	26.8	26.4	26.3	24.9	23.7	22.3	20.8	16.3	13.8	34
36		23.4	24.3	24.4	24.2	24.5	23.1	22	21.2	20.1	16.1	13.8	36
38			22.2	22.4	23	22.8	21.6	21	20.3	19	15.8	13.8	38
40			20.5	20.7	21.5	21.1	20.1	19.7	19	17.8	15.6	13.6	40
45			17	17.9	17.8	17.5	17.7	17	16.4	15.7	14.9	13.2	45
50				15.2	15.2	15.4	15.1	14.9	14.4	13.8	12.8	12.4	50
55				13.1	13	13.3	13	13	12.6	12	11.1	10.7	55
60					11.3	11.6	11.4	11.3	10.9	10.4	9.6	9.3	60
65					9.9	10.2	9.9	9.9	9.4	9	8.4	8.1	65
70					8.8	9	8.8	8.7	8.2	7.9	7.3	7.1	70
75						8	7.8	7.7	7.2	6.9	6.3	6.2	75
80						7.2	6.9	6.8	6.4	6.1	5.5	5.4	80
85							6.1	6	5.7	5.4	4.8	4.7	85
90							5.5	5.4	5	4.7	4.2	4.1	90
95								4.8	4.4	4.1	3.6	3.5	95
100								4.2	3.8	3.6	3.1	3.1	100
105								3.8	3.4	3.1	2.6	2.6	105
110									2.9	2.7	2.2	2.2	110
115									2.6	2.3	1.8	1.8	115
120										1.9			120

t_250_00207_01_000

Lifting capacities

Forces de levage

T



	34 ft	45 ft	57 ft	68 ft	79 ft	91 ft	102 ft	113 ft	125 ft	136 ft	148 ft	157 ft	
10	93.3	91.7	89.1	75.2	65.2	50.2							10
11	93.3	92.7	89.7	75.7	65.8	50.8							11
12	92.4	91.1	89.8	76.1	66.5	51.4							12
13	88	87.2	84.6	76.6	66.7	52	41						13
14	82.9	81.9	79.4	74.9	66.3	52.5	41.4						14
15	77.4	77.4	74.3	70.2	65.9	53	41.7	32.3					15
16	72.5	73.5	70.1	67.5	61.7	53.1	42	32.6					16
17	67.9	69	66.2	62	58.9	52.5	42.1	32.8					17
18	63.4	64.5	61.9	57.4	55.3	50.8	42.2	33	25.6				18
19	59.3	60.4	57.3	54	51.5	47.8	42.3	33.1	25.8				19
20	55.3	56.4	53.3	51.6	48.3	44.8	41.1	33.1	26	20.6			20
22	47.4	48.9	47.2	45.5	42.7	39.7	37.7	33.4	26.3	20.8	15.9		22
24	40.3	41.8	42.5	40.5	38.1	35.8	33.6	32.2	26.5	21	16		24
26		36.9	38	36.4	34.3	32.1	31.2	29.8	26.5	21.2	16.2	13.5	26
28		32.5	33.5	32.8	30.9	29.9	28.6	27	25.2	21.3	16.4	13.6	28
30		28.8	29.9	29.7	28	27.8	26.1	24.6	23	21.4	16.4	13.7	30
32		25.8	26.8	27	26	25.5	23.9	23.2	22	20.6	16.4	13.8	32
34		23.2	24.1	24.3	24.8	23.4	22	21.6	20.5	19.1	16.3	13.8	34
36		20.9	21.8	22.1	22.9	21.6	21.1	20	19	17.8	16.1	13.8	36
38			19.9	20.9	20.9	20	19.7	18.6	17.9	16.9	15.8	13.8	38
40			18.2	19.2	19.2	18.6	18.4	17.6	16.7	16	14.9	13.6	40
45			14.8	15.8	15.7	16	15.6	15.2	14.2	13.5	12.5	12.2	45
50				13.2	13.2	13.5	13.3	13	12.1	11.5	10.6	10.3	50
55				11.2	11.2	11.5	11.3	11.2	10.5	9.9	9	8.7	55
60					9.6	9.9	9.7	9.5	8.9	8.5	7.7	7.4	60
65					8.4	8.6	8.3	8.2	7.7	7.3	6.6	6.3	65
70						7.5	7.3	7.1	6.6	6.3	5.6	5.4	70
75							6.6	6.4	6.2	5.8	5.4	4.8	75
80							5.8	5.5	5.5	5	4.7	4.1	80
85								4.8	4.7	4.3	4	3.4	85
90								4.2	4.1	3.7	3.4	2.9	90
95									3.6	3.2	2.9	2.4	95
100									3.1	2.7	2.4	1.9	100
105									2.7	2.3	2		105
110										1.9			110

t_250_00511_00_000



	34 ft	45 ft	57 ft	68 ft	79 ft	91 ft	102 ft	113 ft	125 ft	136 ft	148 ft	157 ft	
10	93.3	91.7	89.1	75.2	65.2	50.2							10
11	93.3	92.7	89.7	75.7	65.8	50.8							11
12	93.3	93.2	89.8	76.1	66.5	51.4							12
13	93.3	92.5	84.6	76.6	66.7	52	41						13
14	90.3	87.4	79.4	74.9	66.3	52.5	41.4						14
15	85.1	81.5	74.3	70.2	65.9	53	41.7	32.3					15
16	80.1	76.6	70.1	67.5	61.7	53.1	42	32.6					16
17	74.6	71.9	66.2	62	58.9	52.5	42.1	32.8					17
18	69.6	66	61.9	57.4	55.3	50.8	42.2	33	25.6				18
19	63.3	60.9	57.3	54	51.5	47.8	42.3	33.1	25.8				19
20	57.1	56.4	53.3	51.6	48.3	44.8	41.1	33.1	26	20.6			20
22	47.4	48.9	47.2	45.5	42.7	39.7	37.7	33.4	26.3	20.8	15.9		22
24	40.3	41.8	42.5	40.5	38.1	35.8	33.8	32.2	26.5	21	16		24
26		36.9	38	36.4	34.4	32.3	31.5	30.1	26.7	21.2	16.2	13.5	26
28		32.5	33.5	33	31.2	29.9	29	27.5	25.7	21.3	16.4	13.6	28
30		28.8	29.9	30	28.4	28.1	26.6	25.2	23.7	21.4	16.4	13.7	30
32		25.9	26.8	27	26.1	26	24.5	23.3	22.3	21.1	16.4	13.8	32
34		23.4	24.3	24.5	25	24	22.6	22.1	21.2	19.8	16.3	13.8	34
36		21.3	22.1	22.3	23.1	22.3	21.1	20.6	19.7	18.4	16.1	13.8	36
38			20.3	21.2	21.2	20.7	20.2	19.3	18.4	17.4	15.8	13.8	38
40			18.6	19.6	19.6	19.2	19.1	18	17.3	16.5	15.6	13.6	40
45			15.4	16.3	16.2	16.5	16.2	15.9	15	14.3	13.3	12.8	45
50				13.7	13.7	14	13.7	13.7	12.9	12.3	11.4	11	50
55				11.8	11.8	12	11.8	11.8	11.2	10.6	9.7	9.4	55
60					10.2	10.4	10.2	10.2	9.6	9.2	8.4	8.1	60
65					8.9	9.1	8.9	8.8	8.3	7.9	7.2	7	65
70						8.1	7.8	7.7	7.2	6.9	6.3	6.1	70
75							7.1	6.9	6.8	6.3	6	5.4	75
80							6.3	6.1	6	5.5	5.2	4.7	80
85								5.3	5.2	4.8	4.6	4	85
90								4.7	4.6	4.2	4	3.4	90
95									4	3.6	3.4	2.9	95
100									3.6	3.1	2.9	2.4	100
105									3.1	2.7	2.4	1.9	105
110										2.3			110
115										2			115

t_250_00211_00_000

Lifting capacities

Forces de levage

T



	34 ft	45 ft	57 ft	68 ft	79 ft	91 ft	102 ft	113 ft	125 ft	136 ft	148 ft	157 ft	
10	93.3	91.7	89.2	75.2	65.2	50.2							10
11	93.3	92.7	89.7	75.7	65.8	50.9							11
12	92.2	91	89.8	76.1	66.5	51.4							12
13	87.9	87	84.7	76.6	66.7	51.9	41						13
14	82.4	81.6	79.3	73.6	66.2	52.5	41.4						14
15	76.9	76.9	73.1	68.5	64.4	52.9	41.7	32.3					15
16	71.9	72.9	69.9	65.4	61.1	53.1	42	32.6					16
17	67.3	68.3	65.1	60.1	57.8	51.9	42.1	32.8					17
18	62.7	64	60.1	56.2	53.9	49.5	42.1	33	25.6				18
19	58.6	59.2	55.7	53.2	50.1	46.3	42	33.1	25.8				19
20	54.4	54.8	51.7	50.2	46.8	43.6	40.2	33.1	26	20.6			20
22	46	47.5	46.5	44.1	41.5	38.7	36.6	33.4	26.3	20.8	15.9		22
24	39.1	40.6	41.2	39.3	37	34.6	33.1	31.6	26.5	21	16		24
26		35.9	36.8	35.2	33.1	31	30.4	28.8	26	21.2	16.2	13.5	26
28		31.5	32.6	31.6	29.8	29.2	27.6	26	24.3	21.3	16.4	13.6	28
30		28	29	28.6	27.1	26.9	25.1	24	22.8	21.4	16.4	13.7	30
32		24.9	25.9	26.1	25.9	24.6	23	22.6	21.4	19.9	16.4	13.8	32
34		22.3	23.2	23.5	23.9	22.6	21.7	20.8	19.7	18.4	16.3	13.8	34
36		20.1	21	22.1	22	20.8	20.4	19.3	18.5	17.4	15.9	13.8	36
38			19.2	20.2	20.2	19.3	19.1	18.1	17.4	16.4	15.3	13.8	38
40			17.5	18.5	18.6	18.4	17.7	17.1	16.2	15.4	14.2	13.6	40
45			14.3	15.2	15.2	15.5	15	14.6	13.7	13	12	11.6	45
50				12.7	12.7	13	12.8	12.5	11.6	11	10.1	9.8	50
55				10.8	10.7	11	10.8	10.7	10	9.4	8.5	8.3	55
60					9.2	9.4	9.2	9	8.5	8.1	7.3	7	60
65					8	8.2	8	7.8	7.3	6.9	6.2	6	65
70					7	7.2	6.9	6.8	6.3	6	5.2	5	70
75						6.3	6	5.9	5.4	5.1	4.4	4.3	75
80						5.5	5.2	5.1	4.7	4.4	3.7	3.6	80
85							4.5	4.4	4.1	3.8	3.1	3	85
90							4	3.8	3.4	3.2	2.6	2.5	90
95								3.3	2.9	2.7	2.1	2	95
100								2.9	2.4	2.2			100
105								2.5	2	1.8			105

maxt_250_00512_00_000





	34 ft	45 ft	57 ft	68 ft	79 ft	91 ft	102 ft	113 ft	125 ft	136 ft	148 ft	157 ft	
10	93.3	91.7	89.2	75.2	65.2	50.2							10
11	93.3	92.7	89.7	75.7	65.8	50.9							11
12	93.3	93.2	89.8	76.1	66.5	51.4							12
13	93.3	92.5	84.7	76.6	66.7	51.9	41						13
14	90	87.6	79.3	73.6	66.2	52.5	41.4						14
15	84.7	80.4	73.1	68.5	64.4	52.9	41.7	32.3					15
16	79.3	75.5	69.9	65.4	61.1	53.1	42	32.6					16
17	73.8	69.9	65.1	60.1	57.8	51.9	42.1	32.8					17
18	68.5	64.3	60.1	56.2	53.9	49.5	42.1	33	25.6				18
19	61.4	59.2	55.7	53.2	50.1	46.3	42	33.1	25.8				19
20	55.4	54.8	51.7	50.2	46.8	43.6	40.2	33.1	26	20.6			20
22	46	47.5	46.5	44.1	41.5	38.7	36.7	33.4	26.3	20.8	15.9		22
24	39.1	40.6	41.2	39.3	37	34.7	33.3	31.6	26.5	21	16		24
26		35.9	36.8	35.4	33.3	31.2	30.8	29.3	26.4	21.2	16.2	13.5	26
28		31.5	32.6	32	30.2	29.6	28.1	26.6	25	21.3	16.4	13.6	28
30		28	29	29.1	27.6	27.5	25.8	24.4	23	21.4	16.4	13.7	30
32		25.1	26	26.3	26	25.3	23.8	23.2	22	20.6	16.4	13.8	32
34		22.7	23.5	23.8	24.5	23.3	22	21.6	20.5	19.2	16.3	13.8	34
36		20.6	21.4	22.1	22.4	21.6	21	20.1	19	17.9	16.1	13.8	36
38			19.6	20.6	20.7	20.1	19.8	18.7	18.1	17	15.8	13.8	38
40			18	19	19	18.6	18.5	17.6	16.9	16.3	15.1	13.6	40
45			14.9	15.8	15.7	16	15.7	15.4	14.5	13.8	12.8	12.4	45
50				13.3	13.3	13.6	13.4	13.3	12.5	11.8	10.9	10.6	50
55				11.4	11.4	11.7	11.4	11.4	10.8	10.2	9.3	9	55
60					9.8	10.1	9.9	9.7	9.2	8.8	8	7.8	60
65					8.6	8.8	8.6	8.4	7.9	7.6	6.9	6.7	65
70					7.6	7.8	7.5	7.4	6.9	6.6	5.9	5.7	70
75						6.9	6.6	6.5	6.1	5.7	5.1	4.9	75
80						6.1	5.8	5.7	5.3	5	4.4	4.2	80
85							5.1	5	4.6	4.3	3.8	3.6	85
90							4.5	4.4	4	3.7	3.2	3	90
95								3.8	3.4	3.2	2.7	2.6	95
100								3.3	2.9	2.7	2.2	2.1	100
105								2.9	2.5	2.2			105
110									2.1	1.8			110
115									1.8				115

maxt_250_00212_00_000

Lifting capacities – on tyres

Forces de levage – sur pneus





T

34-45ft   14.00 R 25  360°/0°  28,200lb
12,100lb
10,800lb **85%**

	34 ft					45 ft						
	28,200 lb		12,100 lb		10,800 lb	28,200 lb		12,100 lb		10,800 lb		
	0°	360°	0°	360°	0°	0°	360°	0°	360°	0°		
10	33.2		20.9		19.8	32.3		21.3		20.4	10	
11	29.8		18.4		17.4	29.7		19		18.1	11	
12	26.8		16.2		15.4	27.1		17		16.2	12	
13	24.3		14.6		13.8	24.7		15.3		14.6	13	
14	22.2		13.2		12.5	22.7		14		13.3	14	
15	20.3		11.9		11.3	21		12.8		12.2	15	
16	18.5	9.8	10.8		9.1	19.3		11.8		11.2	16	
17	16.9	8.8	9.6		8.3	17.7		10.8		10.1	17	
18	15.6	8.1	8.6		7.6	16.4		9.9	7.7	9.1	18	
19	14.5	7.4	7.9		6.9	15.3	7	9	7.5	8.3	19	
20	13.5	6.8	7.2		6.3	14.3	7	8.2	7	7.7	20	
22	11.8	5.8	6		5.4	12.6	6.4	7	6	6.6	22	
24	10.2	5	5.1		4.6	11.2	5.5	6	5.2	5.6	24	
26						9.7	4.8	5.2	4.4	4.8	26	
28						8.5	4.1	4.5	3.6	4	28	
30						7.7	3.4	3.7	2.9	3.3	30	
32						6.9	2.8	3	2.4	2.6	32	
34						6.3	2.3	2.5	1.9	2.1	34	
36						5.7	2.1	2.1			36	

0° = over rear - en arrière

t_250_01201_00_000 / 01411_00_000 / 01211_00_000 / 01412_00_000 / 01212_00_000

34-45ft   16.00 R 25  360°/0°  28,200lb
12,100lb
10,800lb **85%**

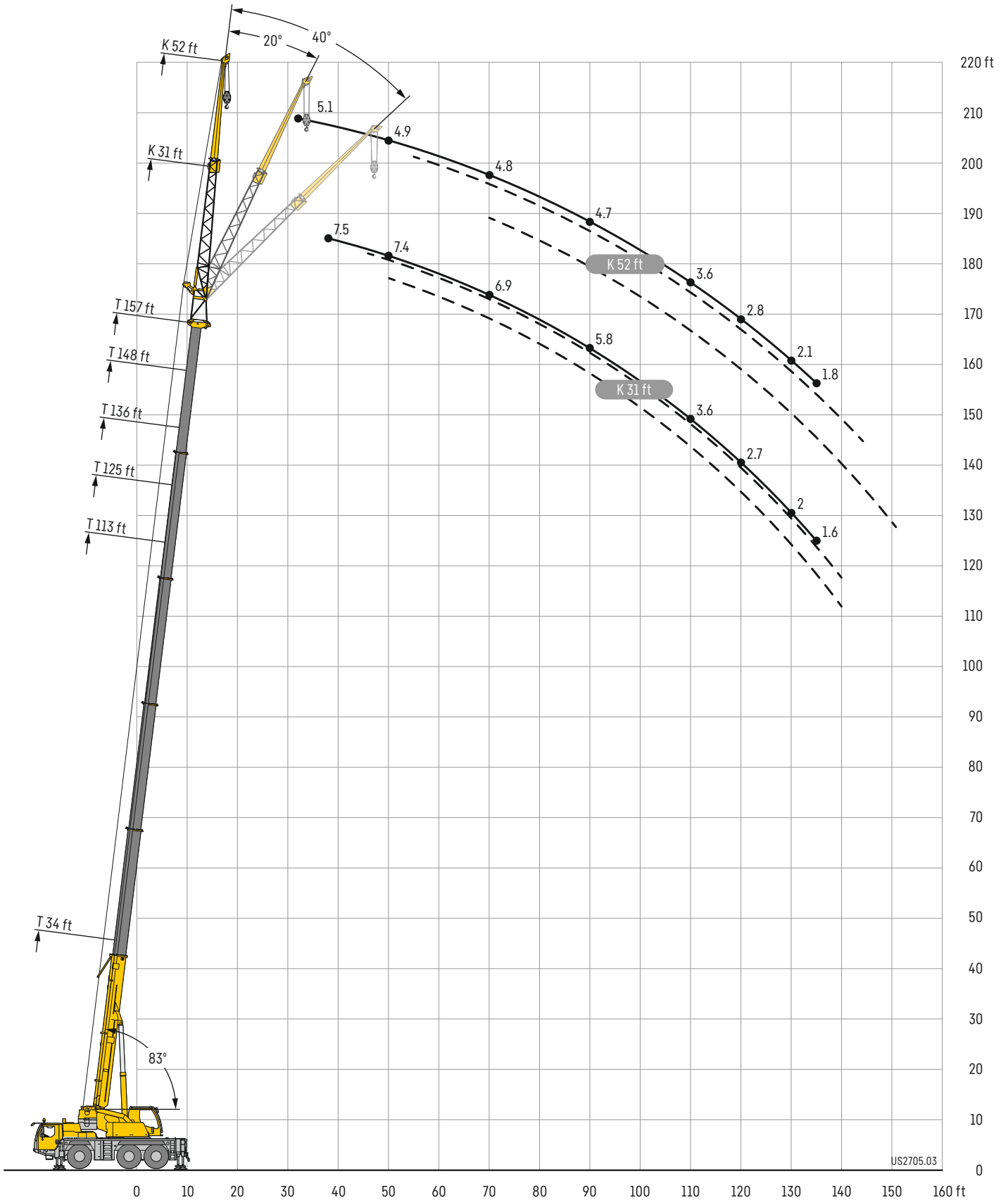
	34 ft					45 ft						
	28,200 lb		12,100 lb		10,800 lb	28,200 lb		12,100 lb		10,800 lb		
	0°	360°	0°	360°	0°	0°	360°	0°	360°	0°		
10	33.1		20.9		19.7	32.3		21.2		20.3	10	
11	29.7		18.3		17.3	29.6		18.9		18.1	11	
12	26.7		16.2		15.4	27		16.9		16.1	12	
13	24.2		14.5		13.8	24.6		15.2		14.5	13	
14	22.1		13.1		12.4	22.6		13.9		13.3	14	
15	20.2		11.9		11.2	20.9		12.8		12.2	15	
16	18.4	9.8	10.8		9.1	19.2		11.7		11.1	16	
17	16.9	8.8	9.6		8.3	17.6		10.8		10.1	17	
18	15.5	8.1	8.6		7.6	16.3		9.8	7.7	9.1	18	
19	14.4	7.4	7.8		6.9	15.2	7	8.9	7.5	8.3	19	
20	13.5	6.8	7.2		6.3	14.2	7	8.1	7	7.7	20	
22	11.8	5.8	6		5.4	12.6	6.4	7	6	6.5	22	
24	10.1	5	5.1		4.6	11.1	5.6	6	5.2	5.6	24	
26						9.6	4.8	5.2	4.4	4.8	26	
28						8.5	4.1	4.4	3.6	4	28	
30						7.7	3.4	3.7	2.9	3.2	30	
32						6.9	2.8	3	2.4	2.6	32	
34						6.2	2.3	2.5	1.9	2.1	34	
36						5.7	2.1	2.1			36	

0° = over rear - en arrière

t_250_01301_00_000 / 01511_00_000 / 01311_00_000 / 01512_00_000 / 01312_00_000

Lifting heights

Hauteurs de levage

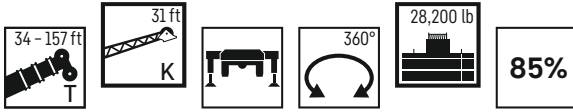


US2705.03

Lifting capacities

Forces de levage

TK



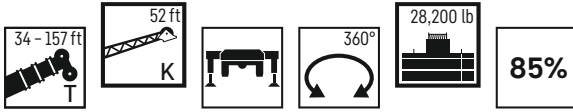
	34 ft			113 ft			125 ft			136 ft			148 ft			157 ft			
	K 31 ft																		
	0°	20°	40°	0°	20°	40°	0°	20°	40°	0°	20°	40°	0°	20°	40°	0°	20°	40°	
10	17.5																		10
11	17.1																		11
12	16.7	14.8																	12
13	16.4	14.8																	13
14	16	14.8																	14
15	15.6	14.8																	15
16	15.2	14.8																	16
17	14.8	14.7																	17
18	14.5	14.6																	18
19	14.1	14.4	11.5	16.7															19
20	13.7	14.2	11.5	16.7															20
22	13	13.7	11.5	16.8			14												22
24	12.3	13.2	11.5	16.7			14			11.5									24
26	11.6	12.7	11.4	16.5			14			11.6									26
28	11	12.2	11.3	16.4			14			11.6									28
30	10.3	11.6	11.1	16.2	14.3		13.9			11.7									30
32	9.6	11.1	10.9	16	14.1		13.8	12.8		11.7									32
34	8.9	10.4	10.6	15.9	13.9		13.8	12.6		11.7									34
36	8.4	9.8	10.1	15.7	13.7	11.5	13.7	12.5		11.7	11.1		8.6						36
38	7.8	9.2	9.6	15.5	13.5	11.5	13.6	12.4		11.6	11		8.6	8.8		7.5			38
40	7.2	8.6	9.1	15.3	13.3	11.5	13.5	12.2	11	11.6	10.9		8.6	8.7		7.5			40
45	6.2	7.5	7.8	14.9	12.9	11.3	13.2	11.9	10.8	11.4	10.7	9.9	8.6	8.6		7.4	7.5		45
50	5.1	6.2	6.1	14.4	12.4	11	12.9	11.5	10.5	11.2	10.5	9.7	8.5	8.4	8.1	7.4	7.4	7.4	50
55	4.2	4.5		13.6	12	10.7	12.6	11.2	10.2	10.9	10.3	9.4	8.3	8.2	7.8	7.4	7.3	7.2	55
60				12.6	11.6	10.4	12	10.9	10	10.5	9.8	9.3	8.1	7.9	7.6	7.2	7.2	7.1	60
65				11.6	11.1	10.1	10.6	10.6	9.4	10	9.3	9	7.9	7.7	7.4	7	7	6.9	65
70				10.3	10.5	9.6	9.7	10.1	9.2	9.3	9	8.7	7.7	7.5	7.2	6.9	6.8	6.7	70
75				9.1	9.7	9.2	9.1	9	9	8.4	8.6	8.4	7.4	7.3	7	6.7	6.6	6.6	75
80				8.4	8.6	8.8	8.1	8.4	8.5	7.6	8	8.1	7.1	7	6.9	6.5	6.4	6.4	80
85				7.6	7.9	7.9	7.5	7.7	7.9	7.2	7.2	7.6	6.7	6.8	6.7	6.2	6.2	6.3	85
90				7.1	7.2	7.4	6.8	7	7.2	6.6	6.7	6.8	6	6.5	6.5	5.8	6	6.1	90
95				6.4	6.6	6.6	6.3	6.5	6.6	5.9	6.3	6.4	5.4	5.8	6.2	5.2	5.6	5.8	95
100				6	6.1	6.2	5.6	5.9	6.1	5.2	5.7	6	4.8	5.2	5.5	4.6	5	5.4	100
105				5.4	5.7	5.8	5	5.3	5.6	4.6	5.1	5.3	4.2	4.6	4.9	4.1	4.5	4.8	105
110				4.9	5.1		4.5	4.7	5	4.1	4.5	4.7	3.7	4.1	4.3	3.6	4	4.2	110
115				4.4	4.6		4	4.2	4.4	3.6	4	4.2	3.2	3.6	3.8	3.1	3.5	3.8	115
120				4	4.2		3.6	3.8		3.2	3.5	3.7	2.8	3.1	3.3	2.7	3	3.3	120
125				3.6	3.7		3.2	3.4		2.8	3.1	3.1	2.4	2.7	2.8	2.3	2.6	2.8	125
130				3.3			2.8	3		2.5	2.7		2	2.3	2.4	2	2.2	2.4	130
135				3			2.5	2.6		2.1	2.4		1.7	1.9		1.6	1.9	2	135
140							2.2			1.8	2			1.6			1.6	1.7	140
145							1.9			1.6	1.7								145

t_250_11001_00_000 / 12001_00_000 / 13001_00_000

Lifting capacities

Forces de levage

TK



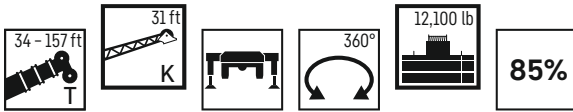
	34 ft			113 ft			125 ft			136 ft			148 ft			157 ft			
	K 52 ft																		
	0°	20°	40°	0°	20°	40°	0°	20°	40°	0°	20°	40°	0°	20°	40°	0°	20°	40°	
10	9																		10
11	9																		11
12	9																		12
13	8.9																		13
14	8.9																		14
15	8.8																		15
16	8.7																		16
17	8.6																		17
18	8.4																		18
19	8.3																		19
20	8.2																		20
22	8	8.7		8.6															22
24	7.7	8.4		8.6			7.7												24
26	7.5	8.2		8.5			7.6												26
28	7.2	8		8.5			7.6			6.7									28
30	7	7.7		8.4			7.5			6.7			5.8						30
32	6.9	7.5		8.3			7.5			6.7			5.8			5.1			32
34	6.7	7.3		8.2			7.4			6.6			5.7			5.1			34
36	6.5	7.1	5.3	8.2			7.4			6.6			5.7			5.1			36
38	6.3	6.9	5.3	8.1			7.3			6.6			5.7			5.1			38
40	6.1	6.7	5.3	8	6.9		7.3			6.5			5.7			5.1			40
45	5.7	6.3	5.1	7.8	6.7		7.2	6.3		6.5			5.7			5			45
50	5.3	6	5.1	7.6	6.5		7	6.2		6.4	5.8		5.6	5.3		4.9			50
55	4.8	5.7	5	7.4	6.3	5.3	6.9	6		6.3	5.7		5.6	5.2		4.9	4.8		55
60	4.2	5.3	4.8	7.2	6.1	5.3	6.7	5.9	5.1	6.2	5.6	5	5.5	5.1		4.8	4.8		60
65	3.7	4.7	4.7	7	5.9	5.2	6.6	5.7	5.1	6.1	5.5	4.9	5.4	5.1	4.7	4.8	4.8		65
70	3.3	4	4.4	6.8	5.8	5.1	6.4	5.6	5	5.9	5.4	4.9	5.4	5	4.7	4.8	4.7	4.5	70
75	2.9	3.3		6.6	5.6	5	6.2	5.5	4.9	5.8	5.2	4.8	5.3	4.9	4.6	4.7	4.7	4.5	75
80				6.3	5.5	4.9	6.1	5.4	4.9	5.7	5.2	4.7	5.2	4.9	4.6	4.7	4.6	4.5	80
85				6.1	5.4	4.9	5.9	5.2	4.8	5.6	5.1	4.7	5.2	4.8	4.6	4.7	4.6	4.4	85
90				5.9	5.3	4.8	5.8	5.1	4.7	5.5	5	4.7	5.1	4.8	4.5	4.7	4.5	4.4	90
95				5.7	5.2	4.8	5.5	5.1	4.7	5.3	4.9	4.6	5	4.7	4.5	4.6	4.5	4.4	95
100				5.3	5.1	4.7	5.3	5	4.7	5.1	4.8	4.6	4.8	4.6	4.5	4.4	4.4	4.3	100
105				5	4.9	4.7	5	4.9	4.7	4.8	4.8	4.6	4.3	4.6	4.4	4.1	4.3	4.2	105
110				4.7	4.8	4.7	4.7	4.7	4.7	4.4	4.6	4.6	3.8	4.4	4.3	3.6	4.2	4.2	110
115				4.5	4.6	4.7	4.3	4.4	4.7	3.9	4.4	4.4	3.4	4	4.2	3.2	3.8	4.1	115
120				4.3	4.2	4.4	3.9	4.2	4.2	3.5	4	4.2	3	3.6	4	2.8	3.4	3.8	120
125				3.9	4.1	4.1	3.5	3.9	4.1	3.1	3.6	3.9	2.6	3.2	3.6	2.4	3	3.4	125
130				3.5	3.8		3.1	3.5	3.7	2.7	3.2	3.5	2.3	2.8	3.1	2.1	2.6	3	130
135				3.2	3.4		2.7	3.1	3.3	2.4	2.8	3	1.9	2.4	2.7	1.8	2.3	2.6	135
140				2.9	3.1		2.4	2.7		2.1	2.4	2.7	1.6	2	2.3		2	2.3	140
145				2.6	2.8		2.2	2.4		1.8	2.1	2.3		1.7	2		1.7	1.9	145
150				2.3	2.5		1.9	2.1			1.8				1.6			1.6	150
155				2.1			1.7	1.8			1.6								155
160								1.6											160

t_250_21001_00_000 / 22001_00_000 / 23001_00_000

Lifting capacities

Forces de levage

TK



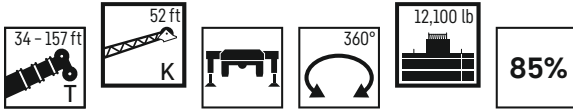
	34 ft			113 ft			125 ft			136 ft			148 ft			157 ft			
	K 31 ft																		
	0°	20°	40°	0°	20°	40°	0°	20°	40°	0°	20°	40°	0°	20°	40°	0°	20°	40°	
10	17.5																		10
11	17.1																		11
12	16.7	14.8																	12
13	16.4	14.8																	13
14	16	14.8																	14
15	15.6	14.8																	15
16	15.2	14.8																	16
17	14.8	14.7																	17
18	14.5	14.6																	18
19	14.1	14.4	11.5	16.7															19
20	13.7	14.2	11.5	16.7															20
22	13	13.7	11.5	16.8			14												22
24	12.3	13.2	11.5	16.7			14			11.5									24
26	11.6	12.7	11.4	16.5			14			11.6									26
28	11	12.2	11.3	16.4			14			11.6									28
30	10.3	11.6	11.1	16.2	14.3		13.9			11.7									30
32	9.6	11.1	10.9	16	14.1		13.8	12.8		11.7									32
34	8.9	10.4	10.6	15.9	13.9		13.8	12.6		11.7									34
36	8.4	9.8	10.1	15.7	13.7	11.5	13.7	12.5		11.7	11.1		8.6						36
38	7.8	9.2	9.6	15.1	13.5	11.5	13.6	12.4		11.6	11		8.6	8.8			7.5		38
40	7.2	8.6	9.1	14.6	13.3	11.5	13.5	12.2	11	11.6	10.9		8.6	8.7			7.5		40
45	6.2	7.5	7.8	12.9	12.8	11.3	12.3	11.9	10.8	11.2	10.7	9.9	8.6	8.6			7.4	7.5	45
50	5.1	6.2	6.1	11.4	11.8	11	10.9	11.1	10.5	10.1	10.4	9.7	8.5	8.4	8.1	7.4	7.4	7.4	50
55	4.2	4.5		10.2	10.7	10.4	9.6	10	10.1	9.1	9.2	9.4	8.1	8.2	7.8	7.4	7.3	7.2	55
60				9.3	9.3	9.6	8.5	8.6	9.3	7.9	8.2	8.7	7.2	7.9	7.6	6.8	7.2	7.1	60
65				8.1	8.2	8.6	7.4	8	8.1	6.8	7.6	7.6	6.1	6.9	7.4	5.9	6.7	6.9	65
70				7.1	7.6	7.5	6.5	7.1	7.4	5.9	6.6	7.2	5.2	6	6.6	5	5.8	6.4	70
75				6.3	6.8	7.1	5.6	6.2	6.8	5.1	5.8	6.3	4.4	5.1	5.6	4.3	4.9	5.5	75
80				5.5	6	6.4	4.9	5.4	5.9	4.4	5	5.5	3.8	4.4	4.8	3.6	4.2	4.7	80
85				4.8	5.3	5.6	4.3	4.7	5.2	3.7	4.4	4.7	3.2	3.7	4.1	3	3.6	4	85
90				4.2	4.6	4.9	3.7	4.1	4.5	3.2	3.8	4.1	2.6	3.1	3.5	2.5	3	3.4	90
95				3.7	4	4.3	3.2	3.6	3.9	2.7	3.2	3.5	2.1	2.6	2.9	2	2.5	2.8	95
100				3.2	3.4	3.7	2.7	3.1	3.4	2.2	2.7	3	1.7	2.1	2.4		2	2.3	100
105				2.7	3	3.2	2.3	2.6	2.9	1.8	2.3	2.5		1.7	2		1.6	1.9	105
110				2.3	2.5		1.9	2.2	2.4		1.9	2.1							110
115				2	2.2			1.8	2			1.7							115
120				1.6	1.8														120

t_250_11011_00_000 / 12011_00_000 / 13011_00_000

Lifting capacities

Forces de levage

TK



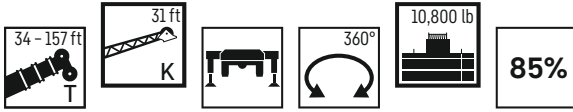
	34 ft			113 ft			125 ft			136 ft			148 ft			157 ft			
	K 52 ft																		
	0°	20°	40°	0°	20°	40°	0°	20°	40°	0°	20°	40°	0°	20°	40°	0°	20°	40°	
10	9																		10
11	9																		11
12	9																		12
13	8.9																		13
14	8.9																		14
15	8.8																		15
16	8.7																		16
17	8.6																		17
18	8.4																		18
19	8.3																		19
20	8.2																		20
22	8	8.7		8.6															22
24	7.7	8.4		8.6			7.7												24
26	7.5	8.2		8.5			7.6												26
28	7.2	8		8.5			7.6			6.7									28
30	7	7.7		8.4			7.5			6.7			5.8						30
32	6.9	7.5		8.3			7.5			6.7			5.8			5.1			32
34	6.7	7.3		8.2			7.4			6.6			5.7			5.1			34
36	6.5	7.1	5.3	8.2			7.4			6.6			5.7			5.1			36
38	6.3	6.9	5.3	8.1			7.3			6.6			5.7			5.1			38
40	6.1	6.7	5.3	8	6.9		7.3			6.5			5.7			5.1			40
45	5.7	6.3	5.1	7.8	6.7		7.2	6.3		6.5			5.7			5			45
50	5.3	6	5.1	7.6	6.5		7	6.2		6.4	5.8		5.6	5.3		4.9			50
55	4.8	5.7	5	7.4	6.3	5.3	6.9	6		6.3	5.7		5.6	5.2		4.9	4.8		55
60	4.2	5.3	4.8	7.1	6.1	5.3	6.7	5.9	5.1	6.2	5.6	5	5.5	5.1		4.8	4.8		60
65	3.7	4.7	4.7	6.7	5.9	5.2	6.3	5.7	5.1	5.9	5.5	4.9	5.4	5.1	4.7	4.8	4.8		65
70	3.3	4	4.4	6.3	5.8	5.1	6	5.6	5	5.6	5.4	4.9	5.1	5	4.7	4.8	4.7	4.5	70
75	2.9	3.3		6	5.5	5	5.8	5.4	4.9	5.2	5.2	4.8	4.5	4.9	4.6	4.3	4.7	4.5	75
80				5.7	5.3	4.9	5.1	5.2	4.9	4.5	5	4.7	3.8	4.7	4.6	3.7	4.5	4.5	80
85				5.1	5.1	4.8	4.5	5	4.8	3.9	4.7	4.7	3.2	4.2	4.6	3.1	4	4.4	85
90				4.5	4.9	4.8	3.9	4.7	4.7	3.4	4.2	4.6	2.7	3.6	4.3	2.5	3.4	4.2	90
95				4	4.6	4.7	3.4	4.1	4.5	2.9	3.7	4.3	2.2	3.1	3.8	2.1	2.9	3.6	95
100				3.5	4.1	4.4	2.9	3.6	4.1	2.4	3.2	3.7	1.8	2.6	3.2	1.6	2.4	3.1	100
105				3	3.6	4	2.5	3.1	3.6	2	2.7	3.2		2.1	2.7		2	2.6	105
110				2.6	3.1	3.4	2.2	2.7	3.1	1.7	2.3	2.8		1.7	2.3		1.6	2.2	110
115				2.3	2.7	3	1.8	2.3	2.7		1.9	2.3			1.8			1.7	115
120				1.9	2.3	2.6		2	2.3		1.6	1.9							120
125				1.6	2	2.2		1.6	1.9			1.6							125
130					1.7				1.6										130

t_250_21011_00_000 / 22011_00_000 / 23011_00_000

Lifting capacities

Forces de levage

TK



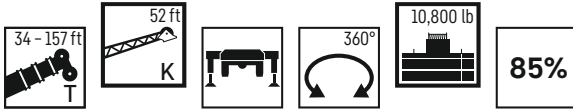
	34 ft			113 ft			125 ft			136 ft			148 ft			157 ft			
	K 31 ft																		
	0°	20°	40°	0°	20°	40°	0°	20°	40°	0°	20°	40°	0°	20°	40°	0°	20°	40°	
10	17.5																		10
11	17.1																		11
12	16.7	14.8																	12
13	16.4	14.8																	13
14	16	14.8																	14
15	15.6	14.8																	15
16	15.2	14.8																	16
17	14.8	14.7																	17
18	14.5	14.5																	18
19	14.1	14.4	11.5	16.7															19
20	13.7	14.2	11.5	16.7															20
22	13	13.7	11.5	16.8			14												22
24	12.3	13.2	11.5	16.7			14			11.4									24
26	11.7	12.7	11.4	16.5			14			11.6									26
28	11	12.2	11.3	16.4			14			11.6									28
30	10.3	11.6	11.1	16.2	14.3		13.9			11.7									30
32	9.6	11	10.9	16	14.1		13.9	12.7		11.7									32
34	9	10.4	10.6	15.9	13.9		13.8	12.6		11.7									34
36	8.4	9.8	10.1	15.5	13.7	11.5	13.7	12.5		11.7	11.1		8.6						36
38	7.8	9.2	9.6	14.9	13.5	11.5	13.6	12.4		11.6	11		8.6	8.8			7.5		38
40	7.2	8.6	9.1	14.4	13.3	11.5	13.2	12.2	11	11.6	10.9		8.6	8.7			7.5		40
45	6.2	7.5	7.8	12.6	12.6	11.3	12	11.9	10.8	11	10.7	9.9	8.6	8.6			7.4	7.5	45
50	5.1	6.2	6.1	11.1	11.5	11	10.5	11	10.5	9.6	10.3	9.7	8.5	8.4	8.1	7.4	7.4	7.4	50
55	4.2	4.5		10	10.2	10.3	9.3	9.6	10	8.7	8.9	9.4	8	8.2	7.8	7.3	7.3	7.2	55
60				8.8	8.8	9.4	8.1	8.5	8.9	7.5	8	8.3	6.8	7.6	7.6	6.5	7.1	7.1	60
65				7.7	8.1	8.2	7	7.7	7.8	6.4	7.3	7.5	5.7	6.5	7.2	5.6	6.3	6.9	65
70				6.8	7.4	7.4	6.1	6.7	7.3	5.5	6.3	6.8	4.9	5.6	6.2	4.7	5.4	6	70
75				5.9	6.5	6.9	5.3	5.9	6.4	4.7	5.4	5.9	4.1	4.8	5.3	3.9	4.6	5.1	75
80				5.2	5.7	6.1	4.6	5.1	5.6	4	4.7	5.1	3.4	4	4.5	3.3	3.9	4.4	80
85				4.6	5	5.3	4	4.4	4.9	3.4	4.1	4.4	2.9	3.4	3.9	2.7	3.3	3.7	85
90				3.9	4.3	4.6	3.4	3.8	4.3	2.9	3.5	3.8	2.3	2.8	3.2	2.2	2.7	3.1	90
95				3.4	3.7	4	2.9	3.3	3.7	2.4	2.9	3.3	1.9	2.3	2.7	1.7	2.2	2.6	95
100				2.9	3.2	3.4	2.5	2.8	3.1	2	2.5	2.8		1.9	2.2		1.7	2.1	100
105				2.5	2.7	3	2.1	2.4	2.6	1.6	2	2.3			1.7			1.6	105
110				2.1	2.3		1.7	2	2.2		1.6	1.9							110
115				1.8	2			1.6	1.8										115
120					1.6														120

maxt_250_11012_01_000

Lifting capacities

Forces de levage

TK

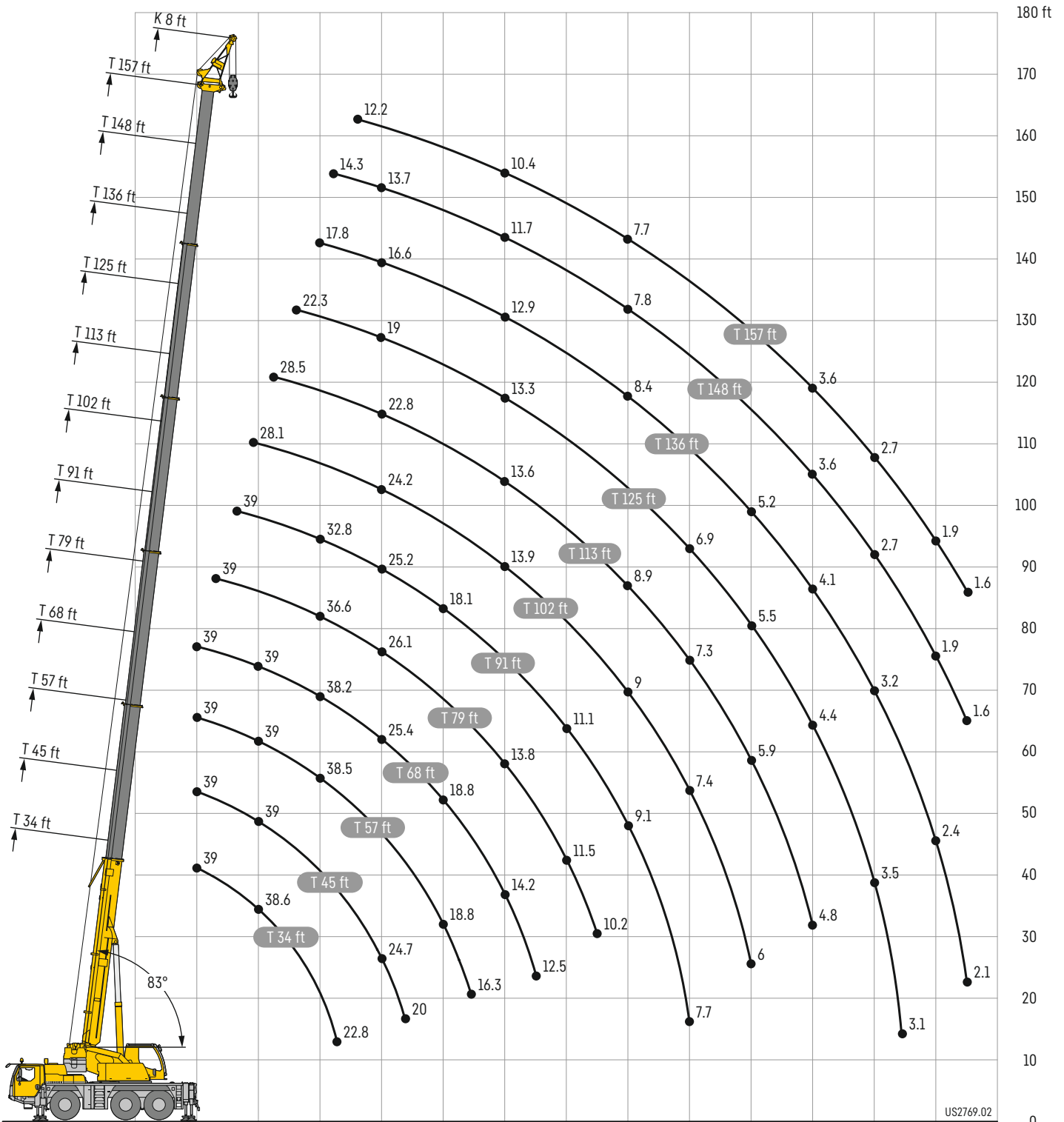


	34 ft			113 ft			125 ft			136 ft			148 ft			157 ft			
	K 52 ft																		
	0°	20°	40°	0°	20°	40°	0°	20°	40°	0°	20°	40°	0°	20°	40°	0°	20°	40°	
10	9																		10
11	9																		11
12	9																		12
13	8.9																		13
14	8.9																		14
15	8.8																		15
16	8.7																		16
17	8.6																		17
18	8.4																		18
19	8.3																		19
20	8.2																		20
22	8	8.7		8.6															22
24	7.7	8.4		8.6			7.7												24
26	7.5	8.2		8.5			7.6												26
28	7.2	8		8.5			7.6			6.7									28
30	7	7.7		8.4			7.5			6.7			5.8						30
32	6.9	7.5		8.3			7.5			6.7			5.8			5.1			32
34	6.7	7.3		8.2			7.4			6.6			5.8			5.1			34
36	6.5	7.1	5.3	8.2			7.4			6.6			5.7			5.1			36
38	6.3	6.9	5.3	8.1			7.3			6.6			5.7			5.1			38
40	6.1	6.7	5.3	8	6.9		7.3			6.5			5.7			5.1			40
45	5.7	6.3	5.1	7.8	6.6		7.2	6.3		6.5			5.6			5			45
50	5.3	6	5.1	7.6	6.5		7	6.2		6.4	5.8		5.6	5.3		4.9			50
55	4.8	5.7	5	7.3	6.3	5.3	6.9	6		6.3	5.7		5.6	5.2		4.9	4.8		55
60	4.2	5.3	4.8	7	6.1	5.3	6.5	5.9	5.1	6.2	5.6	5	5.5	5.1		4.8	4.8		60
65	3.7	4.7	4.7	6.7	5.9	5.2	6.2	5.7	5.1	5.7	5.4	4.9	5.4	5.1	4.7	4.8	4.8		65
70	3.3	4	4.4	6.3	5.7	5.1	6	5.6	5	5.5	5.4	4.9	5	5	4.7	4.6	4.7	4.5	70
75	2.9	3.3		5.9	5.5	5	5.4	5.4	4.9	4.9	5.2	4.8	4.2	4.9	4.6	4	4.7	4.5	75
80				5.4	5.3	4.9	4.8	5.1	4.9	4.2	4.9	4.7	3.5	4.5	4.6	3.4	4.4	4.5	80
85				4.8	5.1	4.8	4.2	4.9	4.8	3.6	4.5	4.7	3	3.9	4.6	2.8	3.7	4.4	85
90				4.2	4.8	4.7	3.6	4.4	4.7	3.1	3.9	4.5	2.4	3.4	4.1	2.2	3.2	4	90
95				3.7	4.4	4.6	3.1	3.8	4.4	2.6	3.4	4	2	2.8	3.5	1.8	2.7	3.4	95
100				3.3	3.8	4.3	2.7	3.4	3.9	2.2	2.9	3.5		2.3	3		2.2	2.9	100
105				2.8	3.3	3.7	2.3	2.9	3.4	1.8	2.4	3		1.9	2.5		1.8	2.4	105
110				2.4	2.9	3.2	1.9	2.5	2.9		2.1	2.5			2			1.9	110
115				2.1	2.5	2.8	1.6	2.1	2.5		1.7	2.1			1.6				115
120				1.7	2.1	2.4		1.8	2.1			1.7							120
125					1.8	2			1.7										125

maxt_250_21012_01_000

Lifting heights

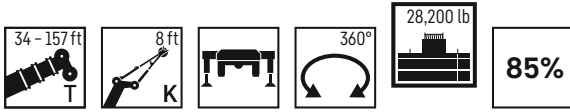
Hauteurs de levage



Lifting capacities

Forces de levage

TK



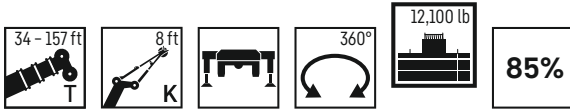
	34 ft	45 ft	57 ft	68 ft	79 ft	91 ft	102 ft	113 ft	125 ft	136 ft	148 ft	157 ft	
	K 8 ft												
10	39	39	39	39									10
11	39	39	39	39									11
12	39	39	39	39									12
13	39	39	39	39	39								13
14	39	39	39	39	39								14
15	39	39	39	39	39								15
16	39	39	39	39	39	39							16
17	39	39	39	39	39	39							17
18	39	39	39	39	39	38.9							18
19	39	39	39	39	39	38.7	28.1						19
20	38.6	39	39	39	39	38.4	36						20
22	35.9	39	39	39	39	37.5	35.8						22
24	32.9	39	39	39	39	36.3	35.2	28.5					24
26	29.8	39	39	39	39	35	34.3	28.4	22.3				26
28	27.2	37.5	39	39	39	33.8	33.4	28.1	21.9				28
30	24.8	35.2	38.5	38.2	36.6	32.8	32.5	27.5	21.6	17.8			30
32	22.8	32.9	36.2	35.9	33.9	31.7	31.3	26.8	21.1	17.6	14.3		32
34		30.5	33.1	32.8	31.3	30.4	29.3	26	20.7	17.4	14.2		34
36		28.3	30.3	30	29	28.9	27.2	25.1	20.1	17.2	14	12.2	36
38		26.5	27.8	27.5	27.6	27	25.5	24.1	19.5	16.9	13.9	12.1	38
40		24.7	25.7	25.4	26.1	25.2	24.2	22.8	19	16.6	13.7	12	40
45		20	21.4	22.1	21.8	21.3	20.7	19.5	17.9	15.7	13.2	11.7	45
50			18.8	18.8	18.5	18.1	17.7	17.1	16.8	14.9	12.7	11.3	50
55			16.3	16.3	15.9	15.5	15.6	15.6	14.7	14.1	12.2	10.9	55
60				14.2	13.8	14.1	13.9	13.6	13.3	12.9	11.7	10.4	60
65				12.5	12.5	12.6	12.1	12.3	12.1	11.4	11	9.7	65
70					11.5	11.1	11.2	10.9	10.8	10.6	9.9	9.2	70
75					10.2	9.9	10.1	9.7	9.6	9.5	8.8	8.6	75
80						9.1	9	8.9	8.7	8.4	7.8	7.7	80
85						8.4	8.1	8.1	7.8	7.5	6.9	6.8	85
90						7.7	7.4	7.3	6.9	6.6	6.1	6.1	90
95							6.7	6.5	6.2	5.9	5.4	5.4	95
100							6	5.9	5.5	5.2	4.7	4.7	100
105								5.3	4.9	4.6	4.1	4.1	105
110								4.8	4.4	4.1	3.6	3.6	110
115									3.9	3.6	3.1	3.1	115
120									3.5	3.2	2.7	2.7	120
125									3.1	2.8	2.3	2.3	125
130										2.4	1.9	1.9	130
135										2.1	1.6	1.6	135

t_250_30001_00_000

Lifting capacities

Forces de levage

TK



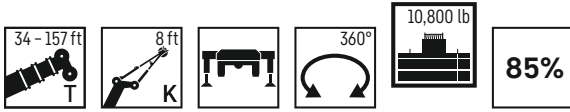
	34 ft	45 ft	57 ft	68 ft	79 ft	91 ft	102 ft	113 ft	125 ft	136 ft	148 ft	157 ft	
	K 8 ft												
10	39	39	39	39									10
11	39	39	39	39									11
12	39	39	39	39									12
13	39	39	39	39	39								13
14	39	39	39	39	39								14
15	39	39	39	39	39								15
16	39	39	39	39	39	39							16
17	39	39	39	39	39	39							17
18	39	39	39	39	39	38.9							18
19	39	39	39	39	39	38.7	28.1						19
20	38.6	39	39	39	39	38.4	36						20
22	35.9	39	39	38.9	38.9	37.5	35.8						22
24	32.9	39	38.7	38.5	35.8	35	33.1	28.5					24
26	29.8	37.5	36.8	34.6	33.5	31.8	29.9	27.5	22.3				26
28	27.2	33.4	33.2	31.2	30.6	28.7	27	25.2	21.9				28
30	24.8	29.7	29.9	29.2	27.9	26.2	24.6	22.9	21.6	17.8			30
32	22.8	26.7	26.9	27.1	25.5	23.9	22.4	21.7	20.7	17.6	14.3		32
34		23.9	24.8	24.8	23.4	21.9	21.2	20.6	19.1	17.4	14.2		34
36		21.6	22.7	22.7	21.5	20.2	19.9	19	17.8	16.9	14	12.2	36
38		20.1	20.7	20.7	19.9	19.2	18.6	17.6	17.1	16.2	13.9	12.1	38
40		18.4	19	19	18.5	18.3	17.3	16.8	16.1	15	13.7	12	40
45		15	15.5	15.5	15.8	15.6	15.2	14.5	14	13.3	12.3	11.6	45
50			12.9	13.5	13.5	13.6	13.2	12.8	12	11.3	10.4	10.1	50
55			10.9	11.5	11.4	11.6	11.4	11	10.4	9.7	8.8	8.6	55
60				9.9	9.8	10	9.8	9.6	9	8.3	7.5	7.4	60
65				8.6	8.5	8.7	8.5	8.3	7.8	7.2	6.4	6.3	65
70					7.4	7.6	7.4	7.2	6.8	6.2	5.5	5.3	70
75					6.5	6.7	6.4	6.3	5.9	5.4	4.6	4.5	75
80						5.8	5.6	5.4	5.1	4.6	3.9	3.8	80
85						5.1	4.8	4.7	4.3	4	3.3	3.2	85
90						4.5	4.2	4.1	3.7	3.4	2.7	2.6	90
95							3.7	3.5	3.2	2.8	2.2	2.1	95
100							3.2	3	2.7	2.3	1.7	1.6	100
105								2.6	2.2	1.9			105
110								2.2	1.8				110

t_250_30011_00_000

Lifting capacities

Forces de levage

TK



	34 ft	45 ft	57 ft	68 ft	79 ft	91 ft	102 ft	113 ft	125 ft	136 ft	148 ft	157 ft	
	K 8 ft												
10	39	39	39	39									10
11	39	39	39	39									11
12	39	39	39	39									12
13	39	39	39	39	39								13
14	39	39	39	39	39								14
15	39	39	39	39	39								15
16	39	39	39	39	39	39							16
17	39	39	39	39	39	39							17
18	39	39	39	39	39	38.9							18
19	39	39	39	39	39	38.7	28.2						19
20	38.5	39	39	39	39	38.4	36						20
22	35.9	39	39	38.7	38.2	37.2	34.8						22
24	32.9	39	38.6	37.3	35.3	34	32.1	28.4					24
26	29.8	36.7	35.7	33.5	33	30.6	28.8	26.8	22.3				26
28	27.2	32.5	32	30.9	29.5	27.7	26.1	24.2	21.9				28
30	24.8	28.9	28.8	28.7	27	25.3	23.7	22.5	21.6	17.8			30
32	22.8	25.8	26.1	26.1	24.6	23	22.1	21.4	19.9	17.6	14.3		32
34		23.1	24.2	23.9	22.6	21.1	20.8	19.9	18.3	17.3	14.2		34
36		21.2	21.9	22	20.8	19.9	19.3	18.4	17.7	16.5	14	12.2	36
38		19.4	20	20	19.1	19	18	17.4	16.7	15.5	13.9	12.1	38
40		17.7	18.3	18.3	17.8	17.9	16.7	16.3	15.5	14.7	13.6	12	40
45		14.4	14.9	14.9	15.5	15.1	14.8	14.3	13.4	12.7	11.7	11.3	45
50			12.4	13.1	12.9	13.2	12.8	12.3	11.5	10.8	9.9	9.7	50
55			10.5	11.1	11	11.2	11	10.6	9.9	9.2	8.4	8.2	55
60				9.5	9.4	9.6	9.4	9.2	8.5	7.9	7.1	6.9	60
65				8.2	8.1	8.3	8.1	8	7.4	6.8	6	5.9	65
70					7.1	7.3	7	6.9	6.4	5.8	5.1	5	70
75					6.2	6.4	6.1	5.9	5.5	5	4.3	4.2	75
80						5.5	5.3	5.1	4.8	4.3	3.6	3.5	80
85						4.8	4.6	4.4	4.1	3.7	3	2.9	85
90						4.3	3.9	3.8	3.4	3.1	2.4	2.3	90
95							3.4	3.2	2.9	2.6	1.9	1.8	95
100							2.9	2.8	2.4	2.1			100
105								2.4	2	1.7			105
110								2	1.6				110

maxt_250_30012_00_000

Equipment

Crane carrier

Frame	Liebherr designed and manufactured, box-type, torsion resistant design of hightensile fine grained structural steel.
Outriggers	4-point supporting system, hydraulically telescopic into horizontal and vertical direction. Operation with remote control, automatic support leveling, electronic inclination display.
Engine	6-cylinder Diesel, make Liebherr, watercooled, output 270 kW (367 h.p.), max. torque 1407 lb-ft. Exhaust emissions to (EU 2016/1628 and EPA/CARB or ECE-R.96, spark arrestor. Fuel reservoir: 93 gallons.
Transmission	ZF 12-speed gear box with automatic control system. Single-stage transfer case with lockable transfer differential.
Axles	All axles steered, axle 2 and 3 driven with lockable differential gears.
Suspension	All axles with hydropneumatic suspension and hydraulic locking facility.
Tyres	6 tyres. Tyre size: 445/95 R 25 (16.00 R 25).
Steering	2-circuit system with hydraulic servo steering. Active speed depending rear axle steering, special steering programs for various driving situations.
Brakes	Service brake: all-wheel servo-air brake, all axles are equipped with disc brakes, dual circuit. Hand brake: Spring-loaded, acting on all wheels of axles 1, 2 and 3. Sustained-action brake: Exhaust retarder with additional Liebherr braking system.
Driver's cab	Spacious corrosion resistant with comfort furnishings, mounted on rubber shock absorbers, safety glazing.
Electrical system	Modern data bus technique, 24 Volt DC.

Crane superstructure

Frame	Liebherr-made, torsion-resistant, welded construction of high-tensile structural steel, single-row ball bearing slewing ring.
Crane drive	Diesel-hydraulic with 1 axial variable displacement pump with automatic capacity control, 1 double gear pump, driven by the carrier Diesel engine, open regulated oil circuits with electrically controlled "load sensing", operation of 4 movements simultaneously.
Control	Electrical control of drives by self-centering joysticks, armrest-integrated control elements, Liebherr system bus (LSB).
Hoist gear	Axial piston fixed displacement motor, hoist drum with integrated planetary gear and spring-loaded static brake, actuation by open regulated oil circuit.
Luffing gear	1 differential ram with pilot operated brake valve.
Slewing gear	Axial piston fixed displacement motor, planetary gear, spring-loaded static brake. Slewing gear invertible from released to locked as a standard feature.
Crane cab	Large screen area, compound glass, comfort furnishing, cabin tiltable 20° to rear.
Safety devices	LICCON2 safe load indicator, hoist limit switch, safety valves against pipe and hose rupture, test system for servicing.
Telescopic boom	1 base section and 5 telescopic sections. All telescopic sections extendable hydraulically and independently from one another. Rapid-cycle telescoping system TELEMATIK. Boom length: 34 ft - 157 ft.
Counterweight	12,100 lb
Electrical system	Modern data bus technique, 24 Volt DC.

Additional equipment

K	Single folding jib, 31 ft Double swing-away jib 31 ft - 52 ft Mechanical adjustment 0°, 20°, 40°
K	Assembly jib 8 ft
2nd hoist gear	For two-hook operation or for operation with swing-away jib if the hoist rope shall remain reeved.
Additional counterweight	16,100 lb for a total counterweight of 28,200 lb.
Tyres	6 tyres. Tyre size: 525/80 R 25 (20.5 R 25).
Drive 6 x 6	Axle 1 additionally driven.
Other items of equipment available on request.	

Équipement

Châssis porteur

Cadre	Fabrication Liebherr, construction en caisson indéformable, en acier à haute résistance à grains fins.
Calage	Dispositif de calage horizontal et vertical en 4 points, entièrement déployable hydrauliquement. Utilisation avec commande à distance, mise à niveau automatique du calage, inclinomètre électronique.
Moteur	Moteur diesel, 6 cylindres, fabriqué par Liebherr, à refroidissement par eau, de 270 kW (367 ch), couple max. 1407 lb-ft. Emissions des gaz d'échappement conformes aux directives (EU) 2016/1628 et EPA/CARB ou ECE-R.96, pare-étincelles. Capacité du réservoir à carburant: 93 gallons.
Boîte de vitesse	Boîte de vitesses ZF à 12 rapports, mécanisme automatisé à commande. Boîte de transfert à un niveau avec blocage de différentiel.
Essieux	Tous les essieux sont directeurs, les essieux 2 et 3 sont entraînés par des engrenages différentiels blocables.
Suspension	Tous les essieux sont suspendus hydropneumatiquement et blocable hydrauliquement.
Pneumatiques	6 roues. Taille: 445/95 R 25 (16.00 R 25).
Direction	2 circuits avec direction assistée hydraulique. Direction active des essieux arrière et dépendante de la vitesse, programmes de direction spéciaux pour les différents modes de déplacement.
Freins	Freins de service: servofrein à air comprimé, tous les essieux sont munis de freins à disque, à 2 circuits. Frein à main: par cylindres à ressorts, agissant sur les roues des essieux 1, 2 et 3. Frein à régime continu: Ralentisseur sur échappement avec système de freinage additionnel Liebherr.
Cabine	Spacieuse cabine, traitement anticorrosion, équipement «grand confort», suspension par silentblochs, vitrage de sécurité.
Installation électrique	Technique moderne de transmission de données par BUS de données, courant continu 24 Volts.

Partie tournante

Cadre	Fabrication Liebherr, construction mécano-soudée en tôle d'acier à haute résistance à grains fins. Couronne d'orientation à 1 rangée de billes.
Entraînement	Diesel hydraulique avec 1 pompe double à débit variable et régulation de puissance automatique, 1 pompe à engrenages double, entraînés par le moteur Diesel du porteur, circuits hydrauliques ouverts avec «load sensing», régulé électriquement. 4 mouvements simultanés praticables.
Commande	Commande électrique des mécanismes par leviers de manoeuvre à centrage automatique, commandes de grue „grand confort“ intégrées aux accoudoirs du siège, Liebherr système bus.
Mécanisme de levage	Moteur hydraulique à cylindrée constante, treuil à réducteur planétaire incorporé et frein d'arrêt à ressort, en circuit hydraulique ouvert ou fermé et régulé.
Mécanisme de relevage	1 vérin différentiel avec clapet de frein commandé.
Dispositif de rotation	Moteur à cylindrée constante à pistons axiaux, engrenage planétaire, frein d'arrêt commandé par ressort. Orientation de série commutable en circuit hydraulique ouvert ou fermé (freinage automatique ou au pied).
Cabine de grue	Large champ de vision, vitrage de sécurité, équipement pour un confort idéal, cabine inclinable de 20° vers l'arrière.
Dispositif de sécurité	Contrôleur de charge LICCON2, fin de course crochet haut, clapets de sécurité en cas de ruptures de flexibles. Système de test pour faciliter l'entretien.
Flèche télescopique	1 élément de base et 5 éléments télescopiques. Chaque élément télescopable indépendamment de l'autre. Système de télescopage TELEMATIK séquentiel rapide. Longueur de flèche: 34 ft - 157 ft.
Contrepoids	12,100 lb
Installation électrique	Technique moderne de transmission de données par BUS de données, courant continu 24 Volts.

Équipement supplémentaire

K	Fléchette pliante simple, longueur 31 ft Double fléchette pliante 31 ft - 52 ft Réglage mécanique à 0°, 20°, 40°
K	Fléchette de montage 8 ft
2ème mécanisme de levage	Pour l'utilisation du deuxième crochet, ou bien pour une utilisation avec fléchette pliante lorsque le câble de levage principal rest moufle.
Contrepoids additionnel	16,100 lb pour un contrepoids total de 28,200 lb.
Pneumatiques	6 roues. Taille: 525/80 R 25 (20.5 R 25).
Entraînement 6 x 6	Essieu 1 est entraîné additionnellement.

Autres équipements supplémentaires sur demande.

Description of symbols

Explication des symboles



Max. capacity
Capacité max.



Outriggers front
Calage avant



Radius
Portée



Max. hoist height
Hauteur de levage max.



Outriggers rear
Calage arrière



Telescopic boom
Flèche télescopique



Max. radius
Portée max.



Crane superstructure
Partie tournante de la grue



Swing away jib
Fléchette pliante



Tyres
Pneumatiques



infinitely variable
en continu



Assembly jib
Fléchette de montage



Hookblock/Capacity
Moufle à crochet/Capacité de charge



Rope diameter
Diamètre



No. of sheaves
Poulies



Rope length
Longueur du câble



No. of lines
Brins



Max. single line pull
Effort au brin maxi.



Weight
Poids



Hoist gear
Treuil de levage



Crane carrier
Châssis porteur



Slewing speeds
Vitesses d'orientation



Driving speed
Vitesse de translation



Boom length
Longueur de la flèche



Gradability
Aptitude à gravir les pentes



Boom position
Position de la flèche



Transmission
Boîte de vitesse



Counterweight
Contrepoids



Gear
Vitesse



Outriggers
Calage



Onroad gear
Vitesse de route



Outriggers - free on tyres
Calage - libre sur pneus



Crawl speed
Marche lente



Slewing gear / Working area
Mécanisme d'orientation / Plage de travail



Max. supporting forces
Forces d'appui max.



Standard
Norme

Remarks

1. The lifting capacities do not exceed 85 % of the tipping load according to ASME B 30.5. The crane's structural steelwork is in accordance with EN 13000 and ASME B 30.5.
2. For the calculation of the load charts at least a wind speed of 30 ft/s (9 m/s, 20 mph) and regarding the load a sail area of 1 m² per ton load and a wind resistance coefficient of 1.2 on the load have been taken into account. For lifting of loads with large sail areas and/or high wind resistance coefficients the maximum wind speed as stated in the load charts has to be reduced.
3. The lifting capacities stated are valid for lifting operation only (corresponding with crane classification according to ISO 4301-1, crane group A1).
4. Lifting capacities are given in kip.
5. The weight of the hook blocks and hooks is part of the load and therefore it must be deducted from the lifting capacities.
6. Working radii are measured from the slewing center.
7. The stated lengths of the telescopic boom are maximum values and may deviate slightly.
8. The lifting capacities given for the telescopic boom apply if the folding jib is removed.
9. Subject to modification of lifting capacities.
10. Lifting capacities above 93,300 lb only with additional pulley block.
11. The data of this brochure serves only for general information. All information is provided without warranty. Instructions for the correct commissioning of the crane please take from the operation manual and the load chart book.
12. The illustrations in this brochure may feature accessories and special equipment not included in the standard scope of delivery.

Remarques

1. La capacité de charge ne doit pas dépasser 85 % de la charge de basculement conformément à ASME B 30.5. La structure métallique de la grue est conforme à EN 13000 et ASME B 30.5.
2. Une vitesse de vent de 30 ft/s (9 m/s, 20 mph) minimum, une surface de prise au vent de 1 m² par tonne ainsi qu'un coefficient de résistance au vent de la charge 1,2 sont pris en compte pour le calcul des tableaux de charge. Lorsque des charges ayant une surface de prise au vent et/ou un coefficient de résistance au vent plus élevé(e)(s) sont levées, la vitesse de vent maximale indiquée dans les tableaux de charge doit être réduite.
3. Forces de levage pour application de grue de montage (correspond à la classification de grues selon ISO 4301-1, groupe de grues A1).
4. Les charges sont indiquées en kip.
5. Le poids du crochet de levage resp. de la moufle à crochet est une partie de la charge et doit donc être déduit de la capacité de charge.
6. Les portées sont calculées à partir de l'axe de rotation.
7. Les longueurs indiquées pour la flèche télescopique sont des valeurs maximales et peuvent légèrement varier dans la réalité.
8. Les charges indiquées pour la flèche télescopique sont valables lorsque la fléchette pliante est démontée.
9. Charges données sous réserve de modification.
10. Forces de levage plus de 93,300 lb seulement avec moufle additionnel.
11. Les données de cette brochure sont données à titre informatif. Ces renseignements sont sans garantie. Les consignes relatives à la bonne mise en service de la grue sont disponibles dans le manuel d'utilisation et le manuel de tableaux de charge.
12. Les figures contiennent également des accessoires et des équipements spéciaux non inclus de série dans la livraison.

MyLiebherr

Our MyLiebherr portal is the easy way for you to access Liebherr's digital service world.
Take advantage of extensive basic and additional services for your mobile and crawler cranes.

Avec notre portail MyLiebherr, accédez facilement à l'univers numérique du service de Liebherr.
Bénéficiez dès maintenant d'un service global et de prestations complémentaires pour vos grues mobiles et sur chenilles.



One portal, all services

MyLiebherr



Planning

Crane Finder



Operations

Performance



Planning

Crane Planner 2.0



Operations

Documents



Maintenance

Spare Parts Catalogue



Planning

LICCON Work Planner



Training

Digital Crane Operator



Maintenance

Parts Shop

Proposition 65



WARNING: This product can expose you to chemicals, including exhaust emissions, including lead and lead compounds, which are known to the State of California to cause cancer, birth defects or other reproductive harm.
For more information see: www.P65warnings.ca.gov/diesel

Subject to modification · Sous réserve de modifications

Liebherr-Werk Ehingen GmbH · Postfach 1361 · 89582 Ehingen, Germany
Phone +49 73 91 5 02-0 · www.liebherr.com

MyLiebherr



Printed in Germany (L)
lwe-tq-250-03-us11-2023